

Project Information

2005 Proposal Number: 0040

Proposal Title: **Providing Landowner Incentives to encourage Riparian Restoration and Natural River Processes on Working Landscapes.**

Applicant Organization Name: **CSU, Chico Research Foundation**

Total Amount Requested: **\$2,148,602**

ERP Region: Sacramento Region

Short Description

The goal of the project is to encourage and facilitate the stewardship and restoration on agricultural lands within the Sacramento River Conservation Area. This will be accomplished through the initiation of a Coordinated Conservation Effort that provides landowners the incentives and assurances needed to incorporate habitat restoration into their agricultural activities. The key elements of this proposal are to (1) investigate and develop a regulatory assurances program to protect participating landowners for incidental take of endangered species, and (2) develop an assistance program to help landowners access incentive programs for habitat conservation.

Executive Summary

**Provide Landowner Incentives to Encourage Riparian Restoration and Natural River Processes on Working Landscapes --
Sacramento River Conservation Area Forum - Executive Summary**

Over the past five years, the Sacramento River Conservation Area Forum (SRCAF) has developed and managed a Project Review and Tracking program that helps address impacts to neighboring landowners, and improve ecosystem benefits, from activities on public land within the Sacramento River Conservation Area. Through recommendations made by both the Board and Technical Advisory Committee (TAC), the SRCAF has influenced nearly 100 projects along 222 miles of the Sacramento River. While riparian habitat has increased significantly, it has become clear that in order to provide habitat for key species that

rely on the riparian corridor of the River and also address CALFED ERP goals and priorities, additional conservation efforts on private land are needed. To do that, a sound approach that encourages landowners to incorporate better habitat conservation practices on their land must be developed.

The goal of this project is to encourage and facilitate the stewardship and restoration of riparian habitat on agricultural lands within the Sacramento River Conservation Area. This will be accomplished through the initiation of a Coordinated Conservation Effort that provides landowners the incentives and assurances needed to incorporate habitat restoration into their agricultural activities. Two years ago, the Landowners Assurances Committee (LAC) received a grant from the Great Valley Center to help develop a Good Neighbor Policy (GNP). Through those discussions, the concept for this grant proposal was developed by members of that committee. The key elements of this proposal are to (1) investigate and develop a regulatory assurances program to protect participating landowners for incidental take of endangered species, and (2) develop an assistance program to help landowners access incentive programs for habitat conservation.

The regulatory assurances task will investigate the species and area to be covered, develop an agreement that provides assurances to protect landowners for incidental take of those species, and establish a framework for administering the program. The TAC has developed a matrix of threatened & endangered wildlife species and landowner concerns to help guide the selection of target species for an incidental take agreement. These species include: Giant Garter Snake, Bald Eagle, Bank Swallow, Least Bell's Vireo, Swainson's Hawk, Western Yellow Billed Cuckoo, Willow Flycatcher, and Valley Elderberry Longhorn Beetle. Anadromous fish species may also be considered. The SRCAF, through extensive public involvement, would be involved with developing the assurances agreement, establishing the parameters of monitoring, and adapting management protocols to meet ERP goals.

The incentive package will include the development of a suite

of programs from various sources for conservation on private lands to help landowners prepare applications, provide technical information, and assist in resolving permitting problems. This process will focus on meeting ERP goals of improving riparian habitat within the migratory corridor of the Sacramento River. At least one demonstration project to remove invasive plant species to restore native vegetation is planned, and pilot projects to investigate and develop plans for private mitigation banks are also included. The SRCAF is coordinating with the appropriate entities to establish a conservation banking program that would offer landowners the opportunity to receive tangible benefits for preserving habitat in perpetuity.

Coupled with the local involvement assured through the makeup of the SRCAF Board and the use of project review and tracking, these tasks cover the issues identified in the GNP by the LAC and create a balanced format for the integration of agricultural activities and ecosystem restoration along the Sacramento River.

A. Project Description

1. Problem -

As was recognized by the State of California Resources Agency in their 2002 report, “Removing Barriers to Restoration”, many private landowners, willing and interested in doing voluntary conservation work, are concerned about how the presence of state and federally listed endangered species affect their property rights. Rumors, misinformation, and high profile news stories about endangered species and their effect on private landowners exacerbate this complex issue. As a result, many landowners choose to avoid activities that will restore habitat and react negatively to restoration on adjoining land that may increase local populations of listed species.

Although there is a tremendous amount of public funding available, through more than 40 state and federal funding programs, to assist private landowners and communities in assessing, designing, permitting, implementing, and monitoring restoration and environmental enhancement projects, there are frequently significant delays getting the actual funds. This contributes to significant hardship for landowners, NGOs, local governments, and the businesses contracted to do the on-the-ground work. These financial incentives are needed to support private landowners, many with no other financial ability to support proactive restoration and stewardship activities that benefit all. Direct technical assistance and support for private landowners is needed, so they can cut through the information overload and red tape to access and utilize available funding and programs. Additionally, even private habitat restoration projects, essential for species recovery, may create conflict with neighboring landowners and local government.

The regulatory review process is another one of the most frequently mentioned barriers to private, voluntary conservation. Laws that safeguard the environmental and physical health of our communities are administered by many different local, state, and federal agencies. Their regulatory review processes are complex, costly, and time consuming. Fees can easily range in the thousands of dollars and the timeline for review frequently stretches well over a year, even for relatively simple projects. From the landowner’s perspective, the system has become so onerous and cumbersome that more and more often landowners are simply choosing not to move forward with these important restoration projects.

The **Landowners Assurances Committee**, a standing committee of the SRCAF, leads the effort to develop a Good Neighbor Policy. In these discussions, it has been clear that many landowners would restore some areas of their property as long as there were adequate incentives, coupled with sound assurances for incidental take of endangered species.

Over the last several years, the Resources Agency focused significant efforts on developing a broad range of initiatives to encourage activities that support voluntary restoration and stewardship throughout the state. A Task Force created by the Resources Agency listened to the frustration of landowners, restoration consultants, and others about legal, administrative, and monetary impediments to their efforts to “do the right thing” on private lands and “working landscapes”. Representatives from landowner groups, state agencies, and the professional restoration community were solicited to examine barriers to restoration, identify options for fixing them, and recommend specific actions to move the best ideas forward.

Many of the activities of the Sacramento River Conservation Area Forum (SRCAF) stem directly from these recommendations. The SRCA includes all of the meander belt and most of the remaining riparian habitat along the Sacramento River from Keswick to Verona. The SRCAF has focused on preventing or reducing conflicts to adjacent landowners from restoration efforts. The SRCAF

Sacramento River Conservation Area Forum

project review, tracking, and follow-up process has helped to address many of the problems associated with the impacts of restoration on neighbors. The Landowner Assurances Committee, a standing committee of the SRCAF, leads the effort to develop a Good Neighbor Policy designed to address many of these issues. In those discussions, these ideas came together in the form of a “strawman” diagram which has been used as the basis for the conceptual diagram for this proposal. With the tasks outlined in this proposal, the SRCAF will expand its efforts to facilitate restoration on private lands. Part of this effort will include the investigation of a programmatic regulatory assurances agreement, such as a safe harbor, to provide assurances for the incidental take of species and coordinate incentives for restoration through the facilitation of various programs, permits, and technical information needed to assist farmers in integrating ecosystem restoration with their agricultural activities.

Importance -

The Sacramento River is the largest, most complex, productive, and regulated meandering river system in California. It is managed for the often-conflicting needs of public safety, water supply and quality, flood control, and the environment. Historic estimates show that over 500,000 acres of rich riparian habitat have been reduced to approximately 5% of that area, making way for cities, agriculture, mining, and other development. The limited meander belt that remains within the Conservation Area, coupled with the existing riparian area, provides one of the richest habitats for the large numbers of fish and wildlife species that depend on it, and maintains a functioning ecosystem with a mosaic of varying forest age classes

In addition to the salmon, and steelhead fisheries that most people are familiar with, the river provides habitat for:

- 250 species of mammals, amphibians, reptiles, and birds including,
- 65 species of special concern (status unknown or precarious) and
- 33 threatened, and endangered species.

The Sacramento River, and the riparian corridor it supports, provides habitat for wildlife that is of national significance. It produces most of the salmon caught in California, and off the coast of Oregon. It is a key corridor for the migration of many species, including neo-tropical migratory songbirds and anadromous fish, some of which are listed species. The area near the river is also very important to agriculture. The rich alluvial soils near the Sacramento River support one of the most productive agricultural regions in the world. Rice, walnuts, almonds, and dried plums anchor an agricultural economic base that is essential to the rural area.

The primary laws protecting special status species, the Federal Endangered Species Act and California Endangered Species Act, are designed to curb continued loss of species and their habitat. The current method used is a regulatory one, with restrictions prohibiting people from undertaking activities that may harm listed species, including destruction of their habitat. This law does not encourage landowners to restore habitat for the benefit of species and, in some cases, has created a fear of future regulation that has led to the removal of unoccupied habitat before any listed species might take up residence. Since many threatened and endangered species and the habitat they require for survival occur on private property, it is necessary to encourage landowners to maintain and reestablish habitat for them. In order to do this, there needs to be some mechanism in place to provide assurances to private landowners so that they will not face future restrictions on their land if they choose to restore habitat. In addition, through both Federal and State legislative actions, and publicly funded bond acts, acquisition and restoration of property along the river has and will continue to occur.

Sacramento River Conservation Area Forum

Most landowners wish to protect their riparian resources while optimizing the value and productivity of their property. Unfortunately, these two goals often appear to be in conflict. An understanding of riparian habitat and stream processes can help landowners conserve riparian resources, and still manage their property productively, and even enhance their property value, but there is a need to develop creative programs to help resolve those issues.

2. Goals, and Objectives -

The riparian corridor between Red Bluff and Colusa is one of the richest and most diverse habitats remaining in California. Since about 1850 this reach has undergone a number of hydrologic, geomorphic, and environmental changes. These changes are caused by dams and diversions for flood control and irrigation, bank protection, pollution, hydraulic mining, gravel mining, urbanization, removal of riparian vegetation for agriculture, and logging. Restoration groups, local RCD's, NRCS, and others have worked to slow or reverse the loss of the habitat through various programs. Land has been purchased outright for habitat restoration and to allow natural river processes to occur. Easements have been purchased leaving land in private ownership, but allowing for restoration and conservation activities. Permit simplification has been attempted in other areas of California and in other states. Not all landowners along the river corridor are interested in selling their land for restoration, for one or more of the reasons previously mentioned, yet there is a need to involve landowners directly in the restoration and conservation process if a continuous habitat corridor is to be achieved. By administering a safe harbor type of program, coupled with assistance for acquiring funding, technical information, and permits, the SRCAF will be able to interest more landowners in restoring parts of their private land to habitat, or at the very least, not remove habitat that establishes itself naturally, and reduce real and perceived incompatibility of maintaining threatened and endangered (T&E) species habitat adjacent to working farms.

The goal of this project is to encourage and facilitate the stewardship and restoration of riparian habitat on agricultural lands within the Sacramento River Conservation Area. This will be accomplished through the initiation of a Coordinated Conservation Effort (CCE) that provides landowners the incentives and assurances needed to incorporate habitat restoration into their agricultural activities.

The key objectives to accomplish this goal are:

- Oversee and coordinate private conservation efforts throughout the SRCA, including the coordination of other linked proposals and performance evaluation to support an adaptive management plan.
- Identify and implement workable solutions to reduce the disincentives associated with conservation practices, including regulatory assurances for incidental take of target species and a coordinated permit process for the SRCA.
- Assist landowners in accessing conservation programs by:
 - Developing conservation plans and facilitating projects for individual landowners;
 - Demonstration of invasive plant species removal from the riparian corridors coupled with restoration,
 - Conservation Banking Pilots,
 - Providing technical support for landowners integrating ecosystem restoration with agricultural activities;

Sacramento River Conservation Area Forum

-Investigating new incentive opportunities for ecosystem conservation and restoration on private land.

One of the most important tasks in this proposal is to investigate, establish, and administer a programmatic agreement like a federal safe harbor (PSHA) and/or State 2087 for the Sacramento River Conservation Area (SRCA). Such an agreement would be developed to provide assurances to landowners, so that they may integrate ecosystem restoration activities into their farming operations without fear of violating the Endangered Species Act. A programmatic level Safe Harbor may cover several species and allow for “take” when a “net conservation benefit” for the area has been determined.

The SRCAF would develop the umbrella agreement with the appropriate agencies (US Fish & Wildlife Service (USFWS), National Marine Fisheries Service (NMFS), and California Dept. of Fish & Game (CDFG)) depending on the target species; provide administration, technical assistance to landowners, and coordination. Landowners deciding to implement conservation strategies on their own, or simply owning property adjacent to land purchased for restoration and/or conservation, may decide to voluntarily enroll in the Program.

The SRCAF has worked hard to develop the rapport and credibility with local government, landowners, agencies, and conservation groups needed to successfully facilitate a Safe Harbor Agreement. With the SRCAF Handbook, the Department of Water Resources (DWR) GIS database, and the work being proposed under the Sacramento River Monitoring Program, some of the baseline information needed to start the surveys and write the agreement is available. Landowners who wish to participate actively would sign a cooperative agreement with the SRCAF which states what habitat enhancement actions will be carried out on their property. The landowner will then be issued a “Certificate of Inclusion” which will incorporate that landowner into the approved incidental take permit. Participating landowners are required to maintain only the habitat initially documented on their property at the time the agreement is signed. Landowners who do not wish to participate actively, but may be somehow connected to restoration property, may sign on as a neighbor and receive the same protections in the event that habitat and/or species move onto their land or currently unlisted species become listed.

The primary incentive of the safe harbor program is to reduce the uncertainty of future land management options for the private landowner with existing or potential endangered species habitat. It removes the regulatory disincentives that currently prevent many landowners from carrying out actions that could benefit species in the riparian ecosystem. The plan eliminates the fear of attracting new animals onto private properties, thus providing security for the landowner’s investments.

The **SRCA Forum** provides a place where landowners, conservation interests, and representatives of state and federal agencies can discuss and understand issues related to habitat restoration and the effects those land use changes have on agriculture and local communities. What we work for is not just discussion, but the development of solutions to those problems, so that both wildlife managers, and farmers can work together productively with minimal conflict. Our Board is made up of seven landowners and seven public interest members from the counties along the Sacramento River; a member of the public appointed by the Secretary of Resources; and three State and three Federal ex-officio member representatives of resource agencies. Because of this, the SRCAF is in a unique position to develop and administer a programmatic safe harbor type of agreement covering the SRCA that provides the much needed assurances to landowners for incidental “take” of endangered species.

Sacramento River Conservation Area Forum

Several other benefits accrue under the safe harbor concept; perhaps the most valuable of these is the issuance of an “incidental take” permit that ensures private parties they have no legal responsibilities for additional members of a listed species attracted to, or produced on, their property as a result of beneficial habitat management and/or restoration. Participation in a Safe Harbor Agreement could also be a positive indication to funding agencies for those landowners applying for habitat conservation funds.

In addition to the conflicts directly arising from endangered species, there are other real and perceived impacts to the local rural way of life and economy. In order for farmers to change productive agricultural land to habitat, there must be some type of an incentive program readily available. Often, one publicly funded program does not provide enough incentives (funding, regulatory relief, stability, or reduction of costs) to encourage a landowner to invest in significant changes in their farming operations. At a Landowners Incentives Workshop held by the SRCAF last summer, the idea of crafting a suite of incentive programs tailored to each landowner’s needs was favorably discussed by the participants. Several agencies have programs that, if tied together, could present a workable package for a landowner to invest in conservation activities. The need to craft incentive programs that incorporate state, federal, and private programs is obvious, but one that most agencies do not have the authority or staff time to attempt

The **Sacramento River Monitoring Program** will also provide some of the critical baseline habitat information that we will need to establish the Agreement. Much of the technical assistance to be provided will come from the same scientists working on that program. This will help us to avoid duplication, and will maximize the return on the data collected under each grant program. Additionally, the USFWS, and CDFG have indicated that they would provide staff to help develop the agreement.

The availability of technical information to complete applications for conservation programs, particularly for riparian habitat, is limited by cost and specificity. Quite often, governmental programs and permits require such detail that individual landowners are reluctant to commit to the time and cost. Through the programmatic Safe Harbor, the SRCAF will have access to current wildlife and habitat baseline information from their involvement in the Sacramento River Monitoring Program that can be used to facilitate conservation activities. As a NGO, the SRCAF would work with

landowners, agencies, and other NGOs to develop conservation programs that include a range of conservation components.

The TAC has developed an SRCA threatened and endangered wildlife species and landowner concerns matrix to help guide the selection of species to be considered in an incidental take agreement. These species include Giant Garter Snake, Bald Eagle, Bank Swallow, Least Bell’s Vireo, Swainson’s Hawk, Western Yellow Billed Cuckoo, Willow Flycatcher, and Valley Elderberry Longhorn Beetle.

For the past five years, the SRCAF has provided landowners, local government, and agencies the tools and opportunity to review and propose changes to projects along the River. Nearly 100 projects have been discussed, and many modified to reduce and prevent impacts to nearby farming operations. Early contact with neighbors; discussions with local officials; and recommendations that include buffers, barriers, and habitat design have been incorporated into the projects. Some proposed projects and acquisitions have been abandoned or modified because of concerns raised through the Forum. The SRCAF is developing a follow-up process to determine if the suggestions have accomplished what was intended, and if the projects are achieving the overall goal of

Sacramento River Conservation Area Forum

ecosystem improvement for target species. While project review is certainly helping farmers deal with management problems resulting from the change of land use on nearby public land, and is an activity that the SRCAF will continue to improve and expand under its current grant, it has been limited to those lands that are, or become, publicly owned.

In order to provide a migratory corridor of habitat along the Sacramento River, private landowners within that corridor must be encouraged to also provide areas that are wildlife friendly. Ownership maps show that there are about 40,000 acres of privately owned land within the SRCA, with 16,000 in the Inner River Zone (IRZ). Interviews with some of those landowners have indicated that most of that land will remain in private ownership. Programs that encourage habitat on those private lands are essential for the recovery of MSCS covered “R” and “I” species that use the Sacramento River corridor and rely on the natural river processes that it supports.

An additional objective for Incentives Assistance would be to initiate specific **Pilot** and **Demonstration Projects**. These projects would provide an example for others to follow.

Pilot Projects--Mitigation Banking is an incentive program that can provide additional income on agricultural property. **Conservation Banking** allows preservation credits as well as restoration credits.

Three specific sites have been identified that would warrant investigation and possible development as mitigation and/or conservation banks:

- The Hawes property in Shasta County has 45 acres of walnuts and mixed riparian that could be developed into a bank for VELB and neo-tropical migrant songbird habitat. A letter of support is included.
- The Burroughs ranch in Sutter County has about 100 acres inside the levee that is farmed and floods regularly. This property will be studied for inclusion into a conservation banking program for Giant Garter Snake and Winter-run Chinook salmon habitat. A letter of support is included.
- The Nature Conservancy manages property near Kopta Slough in Tehama County that could also be developed into VELB, migratory songbird, bank swallow, and Chinook salmon shaded riverine habitat, as well as allowing for the removal of neglected rock revetment. A letter of support is included.

The SRCAF is working with TNC, Wildlands Inc., and landowners to identify sites that would fit under a conservation banking program and could become an active partner in its management.

Demonstration Project--Invasive plant species removal may also provide incentives to landowners while improving native riparian habitat. The SRCAF proposes a removal/restoration program with landowners in the Dairyville area of Tehama County. Non-natives such as *Arundo donax* and *Tamarisk* are known contributors to flood channel constriction, excessive water consumption, and will crowd out native riparian species that are important contributors to the conditions for healthy salmon spawning.

The **SRCAF Technical Advisory Committee (TAC)** meets monthly to review proposed projects, and provide technical guidance to the Board. The **TAC** also discusses, and recommends ideas to: alleviate cross boundary issues, improve biological monitoring, effect project tracking, and develop scientific studies. As a non-profit organization made up of a balanced group of local, state, and federal organizations, the SRCAF is truly, “**A Voice for all Interests**”. The TAC will also be involved in providing coordination and guidance to the **Sacramento River Monitoring Program**.

3. Conceptual model - Please see Attachment 4, Figure 1 and 2.

4. Approach and Scope of Work -

Task 1: Project Management (Administrative, and Technical)

Subtask 1.1: Oversee Aspects of the Entire Project and Coordinate Private Conservation Efforts throughout the SRCA.

The Project Manager will perform a number of important functions to ensure that the project is moving forward and coordinates with current activities being performed by the SRCAF. An important part of this project is coordination among all groups and individuals involved in restoration projects within the SRCA. Currently the SRCAF is involved in sub-reach and site specific planning of numerous projects along the Sacramento River, not limited to restoration. These would continue to be managed while adding the complementary tasks of this proposal.

Additionally the administrative staff will be responsible for coordinating with the Sacramento River Monitoring Program (SRMP). The main administrative coordinator for this grant also has that role for the SRMP, ensuring the highest level of efficiency and resource sharing possible. Grant proposals being submitted by Yolo and Solano County RCDs, and Glenn, Butte, and Colusa County RCDs are also very complimentary to this effort. These applicants will be focusing on similar tasks on working lands outside of the Conservation Area. SRCAF staff has been in contact with all of these project proponents to ensure that projects are complimentary. This relationship will continue to be a coordinated effort with SRCAF activities focused on the Conservation Area and RCD activities on upland and wetland areas outside of the Conservation Area. All proponents have expressed a desire to work together in a coordinated fashion.

Deliverables: 1) Accurate and efficient project management; 2) Quarterly and annual technical reports; 3) Coordination with other grant programs; 4) A process to actively implement adaptive management.

Subtask 1.2: Work with CSU Chico Research Foundation to Develop Sub-Contract Agreements and Invoicing.

Timely administration of all contractual and invoicing needs is critical to the successful administration of this project. Some of the tasks require extensive database management with various consultants or agencies. The SRCAF and CSU Chico Research Foundation will jointly administer these contracts and agreements.

Deliverables: 1) Finalized sub-contracts; 2) Invoice reports; 3) Quarterly and final project reports.

Subtask 1.3: Evaluate the Performance of the Coordinated Conservation Effort (CCE) to Facilitate Adaptive Management.

This task will provide oversight and staff for the Performance Evaluation component of this program, and will work with the TAC to make adaptive management decisions based on the findings of the surveys and feedback from the various workshops. This task is described more fully in the Performance Evaluation Section (5) of the PSP.

Deliverables: 1) Develop, deliver, and analyze Landowner Panel Surveys to measure the following program objectives: views/knowledge about conservation programs, participation in conservation programs, trust in policy stakeholders, environmental behaviors, and standard measures of demographics, and general political attitudes; 2) Upgrade Project Tracking

Sacramento River Conservation Area Forum

Database and collect project management information; 3) Link and analyze cross referenced data to evaluate changes in stakeholder attitudes and behaviors over time.

Task 2: Regulatory Assurances- Identification of Workable Solutions that may be Implemented to Reduce the Disincentives on Farmers Associated with Conservation Practices.

Drafting a Regulatory Assurances Agreement, like a Safe Harbor, is a collaborative and consensus based process involving the USFWS, CDFG, local organizations, resource specialists, landowners, and Sustainable Conservation. Following the decision to proceed with a Safe Harbor or similar program agreement on target species, development of GIS coverage, and on-the-ground species specific baseline surveys would constitute the second phase of providing landowner assurances. USFWS and CDFG approved protocols and methodologies for baseline determination, monitoring, and reporting will be carried out by qualified agency staff and university partners. Where potential disclosure of listed species locations on private property is an issue to landowners, arrangements will be made to complete the required surveys through a contract with qualified consultants, most likely many of the same people that are working on the Sacramento River Monitoring Program. A Safe Harbor Agreement can be drafted in approximately five months to one year. Once agreement is reached on the elements, it is submitted to the USFWS with an application for an Enhancement of Survival Permit. USFWS review of the application will take approximately five months to one year, at which time the agreement is ready to be signed by the master permit holder and USFWS.

Subtask 2.1: Purchase and Interpret Aerial Photography to complete Vegetation Classification and Mapping.

Classification will be completed using California Native Plant Society's (CNPS) Vegetation Rapid Assessment Protocol method of vegetation and habitat sampling (VRAP). CNPS has adopted the rapid assessment method to update the location, species composition, and disturbance information of vegetation types as identified in the first edition of A Manual of California Vegetation (MCV), a CNPS publication. Other agencies, such as California State Parks, the Department of Fish and Game, and the U.S. Forest Service, are also adopting this method for documenting vegetation patterns. By using VRAP, biologists and resource managers can gain a broad ecological perspective, as the full range in ecological variation across broad landscapes can be reflected in the vegetation assessments.

Deliverables: 1) Purchase one-foot resolution, stereo paired, aerial, color photographs and ortho-rectified mosaics; 2) Vegetation classification from aerial interpretation and ground truthing will be completed and documented for approximately 60,000 acres using CNPS VRAP.

Subtask 2.2: Define Habitat Restoration needs, to accomplish Net Conservation Benefit for target MSCS Covered Species.

The SRCAF will work with USFWS and CDFG to determine habitat restoration needs with a Net Conservation Benefit for the target species of concern for regulatory limitations. Currently there are several parallel efforts being investigated in the Sacramento Valley that SRCAF is coordinating with to ensure maximum Conservation Benefit with minimum overlap of efforts. The SRCA is defined by the Inner River Zone as shown in Attachment 5 (Figures 1 and 2), which is primarily riparian habitat, while other efforts are targeted more to wetland and rangeland areas. These can be coordinated with overall benefits to MSCS covered "R" and "I" species. The land cover mapping process will be guided by the classification system implemented in a 1997 land cover study by UC Davis (Greco et al. 2003). Riparian vegetation

Sacramento River Conservation Area Forum

stand height will be mapped for a subset of the project area using 2005 LIDAR data. For river reaches outside of the existing LIDAR data collection area, a photogrammetric approach to estimate tree stand height classes will be used utilizing methods described in Greco et al. (2002), Greco & Plant (2003), and Greco et al. (2003). All digitizing will be projected into UTM-meters (Universal Transverse Mercator), and NAD 83, and will pass USGS Map Accuracy Standards. Metadata will also be generated describing the maps and mapping process. All data and metadata creation and updating will meet Federal Geographic Data Subcommittee guidelines (<http://www.fgdc.gov>).

Deliverables: 1) Identify habitat restoration needs for the target species of concern within the SRCA; 2) SRCA GIS coverage (layers) will be completed for land cover (natural and agricultural vegetation mapping, with habitat attributes), land use, and ownership by parcel.

Subtask 2.3: Draft a SRCA Regulatory Assurances Agreement for Federal and/or State Listed Species.

The SRCAF will facilitate the development of biological opinions for selected MSCS Covered Species within the SRCA, and work with Sustainable Conservation to develop a workable agreement for federal and/or state listed species that encourages private landowners to participate in habitat conservation and restoration while helping sustain working landscapes. This agreement may be a Programmatic Safe Harbor Agreement, or similar agreement of assurances for MSCS covered species. The CDFG has a program under SB231 that allows the incidental take of state listed species, during regular agricultural operations, for landowners who have done voluntary restoration on their land. This program is currently for individual landowners to sign on through CDFG and has been unsuccessful in attracting participants. Initial conversations have indicated the possibility of developing a programmatic agreement for state listed species, in conjunction with a federal Safe Harbor administered by the SRCAF. The SRCAF has been working with the USFWS and CDFG regarding the development of a programmatic agreement and will continue to work closely with these agencies.

Deliverables: 1) Final biological opinions for MSCS Covered Species to be covered under the agreement; 2) A Regulatory Assurances Agreement (PSHA or other) applicable to the resource agencies and local farmers.

Subtask 2.4: Provide Outreach and Education about Regulatory Assurances to Landowners within the SRCA.

Implementation of an assurances agreement, such as a Safe Harbor, begins by conducting a public education and outreach campaign to increase agricultural landowner understanding about assurances agreements and how they work. Ultimately the goal of this work is to identify landowners interested in enrolling their property in the programmatic agreement. Outreach can be conducted through written materials, group meetings, and education for those working directly with farmers. This first step can be undertaken concurrently with the USFWS review of the Agreement application. The SRCAF will work with Sustainable Conservation and local RCDs to provide newsletters and public information to our extensive local mailing list and offer workshops to those interested. During this phase we will be targeting more than 800 landowners with workshops and presentations. At least three workshops will be coordinated in conjunction with local RCDs, to address any specific concerns or issues related to the different reaches of the Conservation Area. Newsletters will be sent to more than 800 landowners within the Conservation Area, and press releases will be sent to media representatives, Farm Bureaus, and RCDs in all affected counties.

Deliverables: 1) Articles in our quarterly newsletter; 2) Press releases as needed;

Sacramento River Conservation Area Forum

3) At least three workshops and landowner meetings.

Subtask 2.5: Administer Regulatory Assurances Agreement (PSHA) (beginning Year 3).

Using imagery, base maps, and updated vegetation, land use, and ownership coverage developed in phase one, qualified staff scientists and graduate students, from both UCD and CSUC, will conduct parcel-by-parcel T&E species surveys on voluntary participating landowner properties to establish biological baselines. Data obtained through regulatory agency approved survey protocols and methodologies will be documented and managed within the Sacramento River GIS. Alternate data collection and information management arrangements will be made through private contractors where data sensitivity and/or privacy are an overriding consideration. The Project Tracker website will need to be updated with a monitoring component added for future monitoring of restoration and conservation sites. In addition to meeting site specific biological survey needs, these new coverages and program tracking tools would provide a more rigorous planning foundation for integration with CALFED Program regional planning, restoration, implementation, monitoring, and performance evaluation.

Deliverables: 1) Biological baseline surveys; 2) Contract for and oversee threatened and endangered species surveys of a private sector consultant; 3) Updated Project Tracker website with added monitoring component.

Subtask 2.6: Assist in the Development of a Coordinated Permit Process for the SRCA.

The SRCAF will work with Sustainable Conservation and appropriate agencies to develop a coordinated permitting process for landowners interested in pursuing conservation and restoration activities. The size of the geographic area covered by the proposal presents a variety of options that improve the permitting process for restoration work on private lands. Given the diversity of habitats, restoration activities, and private landowner concerns, the goal of “lowering the permit barrier” can be achieved in a number of ways. In 2002, the Resources Agency asked Sustainable Conservation to convene a task force of government officials, private landowners, and non-profit organizations that would result in clearly defined, practical actions that could remove barriers to restoration. Ten actions were put forward by the task force in 2002 and significant progress has been made on three: create a categorical exemption under CEQA for Small Scale Restoration Projects, Assist the Expansion of Watershed Based Permit Coordination Programs, Support Safe Harbor Programs.

Because SRCAF serves as a community forum for so many groups carrying out restoration work, it is well positioned to remove barriers that still exist. The remaining recommendations put forward by the Task Force all have applicability in the project area and relevance to ERP objectives. Three of the recommendations could be carried out by SRCAF with assistance from Sustainable Conservation. These recommendations are:

- Create a Permit Assistance Center to aid Landowners doing Voluntary Conservation,
- Develop a Pilot Technical Review Team for Large Scale Restoration Projects,
- Implement a Pilot Project to develop a Program EIR in conjunction with a watershed plan.

Sustainable Conservation has identified several other opportunities for improving the permit process in the Sacramento River area. These include:

- Working with CDFG and USFWS to identify incentives for restoration that can be joined with recovery plans for particular species – combining funding and permit assistance to Ag users,

Sacramento River Conservation Area Forum

- Free standing consultations for individual or a suite of species (Giant Garter Snake, similar to consultation for California Red-legged frogs),
- Program CEQA for anticipated actions with less than significant environmental impacts,
- Regional General Permit from Army Corps for certain types of activities – (such a permit has been issued for state of Oregon).

Much of this work is in development - by the time we enter into contract, we would have a narrow focus and would contract on specific deliverables.

Deliverables: 1) Coordinated permit process for restoration projects.

Task 3: Assist Landowners in Accessing Conservation Programs

Subtask 3.1: Identify and Develop a Comprehensive List of Available Programs.

In July of 2005, the SRCAF hosted a Landowner Incentives Workshop and will build on that base of programs, from both governmental and private sources, to compile a library of conservation programs that will be made available to landowners.

Deliverables: 1) Library of available conservation programs.

Subtask 3.2: Provide Outreach and Education to Landowners interested in Stewardship and Restoration within the SRCA.

The SRCAF will work with county Resource Conservation Districts and Farm Bureaus to encourage conservation and restoration programs. Five county RCDs and local NRCS offices have been contacted to coordinate programs for local landowners. The SRCAF will work with these groups to create an educational program to promote scientifically-supported conservation practices that address ecosystem restoration within the agricultural community, as well as provide landowner workshops on conservation practices and permitting, site tours, newsletters and educational publications, presentations to stakeholders, educational displays, and awareness activities for GGS and other MSCS covered species.

Deliverables: 1) At least two (2) workshops and presentations per year coordinated with county RCDs, Farm Bureaus, and local officials.

Subtask 3.3: Develop Conservation Plans for Individual Landowners and Coordinate with Program Sponsors.

The SRCAF will work with identified landowners to accomplish at least one demonstration project and up to three pilot projects, and with additional landowners to develop conservation plans and coordinate easements.

- 1) *Demonstration of invasive plant species removal from the riparian area and restoration with native vegetation.* The SRCAF has been coordinating with Tehama County RCD and Cottonwood Creek Watershed Group to develop a “top-down” approach for invasive plant removal. Beginning in upper watersheds and working down to the mainstem of the Sacramento River, then moving downstream, would be the most effective way to remove NRCS target species of invasive plants such as *Arundo donax*, *Tamarisk*, and Himalayan blackberry. The methods being investigated include the use of goats as a control technique. Goat removal will be compared, in both cost and effectiveness, with chemical techniques. To our knowledge there is no other study of this nature. The SRCAF will work with CSU, Chico’s invasive research and removal program to plan and implement this project.

Sacramento River Conservation Area Forum

A landowner willing to participate in this Demonstration Project has been identified. The project will be carried out on approximately 54 acres in Tehama County, and would include removal of several species of invasive plants with a second phase habitat restoration component designed to reduce flood stressors. This landowner is also interested in placing an easement on some of the property and removing an old walnut orchard for habitat restoration. The SRCAF would contact appropriate restoration partners, create a package of available incentive programs, assist with applications for funding and permits, provide technical information, and ensure that work meets the ERP goals as well as the standards and guidelines outlined in the SRCAF handbook. The SRCAF would also ensure that the project is properly tracked on the Project Tracker with future monitoring.

- 2) *Conservation/Mitigation Banking Pilots* - Mitigation Banking offers one of the best methods for landowners to receive tangible benefits from their property. Easements guarantee management for permanent habitat benefits, and credits for increased endangered species can be sold to be applied to other selected sites. Farming practices can occur under monitored conditions, and often recreational programs can generate additional revenue. Conservation Banking allows the establishment of an area that incorporates several smaller banks under a comprehensive management plan.

- Phase 1: Investigate project scope and develop feasibility for three or more properties within the SRCA.
- Phase 2: Coordinate project development, habitat restoration planning, and permit coordination for at least one of the projects.

Deliverables:

- 1) Demonstration Project - Complete removal of invasive plant species from the riparian area of landowner's property, with plans for restoration with native vegetation.
- 2) Pilot Projects - Phase 1: Scope and feasibility report for each property.
Phase 2: Habitat restoration plan and coordinated permit application for at least one property.

Subtask 3.4: Provide Technical Support for Landowners Integrating Ecosystem Restoration with Agricultural Activities.

Through its Technical Advisory Committee, the Forum provides technical assistance to private and public landowners along the river regarding river system processes, riparian habitat protection, and restoration. Through this proposal the Forum will expand its efforts to balance the protection and restoration of riparian habitat with agricultural land uses through assisting private landowners in developing funding proposals, restoration implementation contracts, site-specific plans, permit streamlining, and regulatory coordination.

Deliverables: 1) Coordinated technical support for landowners interested in habitat restoration.

Subtask 3.5: Investigate New Incentive Opportunities for Ecosystem Conservation and Restoration on Private Land

Conservation banking is a fairly new, innovative program that builds on, and is compatible with, mitigation banking. As stated in the 2003 USFWS Memo, Guidance for the Establishment, Use, and Operation of Conservation Banks, "Conservation banking is attractive to landowners because it allows conservation to be implemented within a market framework, where habitat for listed species is treated as a benefit rather than a liability." Conservation banking not only rewards improvement of habitat, it also recognizes the preservation of habitat. By establishing a network, or corridor, that ties individual banks together, they can reduce the

Sacramento River Conservation Area Forum

threat of fragmentation and provide management measures for other threats that a species may encounter. The SRCAF is working with Wildlands Inc, a private mitigation banking consultant, to investigate and coordinate the development of a conservation bank for listed anadromous fish species. Both landowners and T&E species in the Sacramento River corridor could benefit from a well conceived conservation bank.

Deliverables: 1) The SRCAF will continue to advocate the development of innovative, incentive driven programs that encourage farmers to preserve and restore habitat.

5. Performance Evaluation - (Under Task 1)

The project will use a landowner survey and the SRCAF Project Tracking Database to evaluate changes in the conservation-related behaviors and attitudes of the approximately 800 landowners within the Sacramento River Conservation Area. The evaluation program will track change over time and geographically link human behaviors and landscape outcomes.

Landowner Surveys

A panel survey of landowners will measure changes in conservation-related attitudes and behaviors, before and after implementation of the Coordinated Conservation Effort. To establish baseline information, Wave 1 of the landowner survey will be initiated within three months of the project inception. Wave 2 of the survey will be delivered approximately two years after program inception to assess the magnitude of change in the key program objectives. Wave 2 will contact all of the initial respondents a second time, and also draw a second random cross-section. All surveys will utilize stratified random sampling, with the strata based on the four reaches of the Sacramento River Conservation Area. It is our intent to census all 600 farmers, and 220 of the non-farm landowners. The sampling error for the non-farm landowners is +/- 3.2%. There is no sampling error associated with the farmer surveys, due to a direct census of their opinions.

Project Tracking System

The landowner survey data will be integrated with an upgraded version of the SRCAF Project Tracking System. The Project Tracking System provides parcel-level information about ownership, location, land use and zoning, project description and goals, and species and habitat focus. The link between the survey and project monitoring system will be made using the parcel identification numbers provided by county assessors. This information will be kept confidential in the context of the study.

The Project Tracking System will be upgraded to include information about landowner participation in specific conservation programs. For each parcel of land, the Project Tracking System will record the total number of acres covered by different conservation programs, the total number of programs in which the land-owner participates, the total number of specific conservation practices, and the number/diversity of targeted species. These data fields will be integrated into the Safe Harbor Agreement monitoring and reporting requirements.

The evaluation database will allow us to estimate statistical models of attitude and behavior change, which will identify the factors responsible for those changes. Thus, we will gain some insight into *why* the program was effective for different outcomes, leading to an improved program over time.

Sacramento River Conservation Area Forum

Data Source: Landowner Panel Survey

- Landowner attitudes and knowledge about watershed and conservation programs
- Landowner participation in conservation programs
- Landowner interaction with local agencies
- Landowner demographics and land characteristics
- Landowner political attitudes

Data Source: Existing Project Monitoring Database

- Parcel size and location (river mile, township, range, section)
- Parcel land-use characteristics
- Parcel habitat and species focus
- Project goals

Data Source: Upgraded Project Monitoring Database

- Number of acres enrolled in specific participation programs
- Number/acres of conservation practices implemented for each program
- Number of species addressed for each program
- Expected environmental outcomes

6. Feasibility -

Given our past experience with this type of work and in this geographic location, we feel there will be no problem completing this work in the time allotted. The scope of work and task schedule outline an ability to complete this work in the three year time period given. The only contingency that could affect the outcome of this project would be a lack of continued organizational funding for the SRCAF. This proposal relies on a long term commitment from CALFED through the Ecosystem Restoration Program to provide the organizational structure and staff for the Sacramento River Conservation Area Forum to administer and implement this grant.

SCRAF staff has been working with Ken Sanchez, Catrina Martin, and Shannon Holbrook of USFWS and has received assurances that they will deal with NEPA documentation and provide as much assistance as they can. This programmatic scale assurances and incentives program is seen as highly beneficial to the Sacramento River corridor and there is extensive agency support for it. Likewise, conversations with CDFG have indicated support for expanding the current incidental take program under section 2087 to a programmatic level, in hopes of attracting landowners who may have reservations about dealing directly with the agency. They will assist with CEQA documentation as needed.

Through the **Sacramento River Monitoring Program**, the SRCAF will be developing an **Information Dissemination Plan**. This Plan, developed jointly by the SRCAF Board and TAC, will ensure that all stakeholders that may be affected by this program will be engaged and given the opportunity for meaningful participation in this program. All landowners adjacent to potential demonstration sites will be contacted and their views taken into consideration to determine final site selection. The Plan will identify other organizations such as: landowner and grower groups, environmental groups, resource conservation districts, watershed groups, and conservancies to seek their active participation in this program. Recognizing the value in sharing information with our partner organizations, the **SRCAF** will participate in their organizational meetings and will encourage information sharing to better support an adaptive management approach with all of our collective programs.

This program will have a high level of coordination with the recently submitted Sacramento River Monitoring Program. The SRMP was recommended for funding with major modifications. Those modifications are being reworked with the project partners: CSUC, The Nature Conservancy, and

Sacramento River Conservation Area Forum

River Partners. SRCAF is a project partner in that effort, providing education and outreach as well as acting as a repository for the data that will be collected.

SRCAF will also work with local RCDs, Partners for Wildlife, NRCS, and others to secure appropriate funding for the projects being implemented. NRCS has numerous programs such as CSP, WHIP, EQIP, and others that can be accessed for stewardship activities as well as cost share on restoration by landowners. USFWS programs through Partners for Fish and Wildlife, CDFG Landowner Incentives Program, and Conservation Easement purchases through various agencies can also be accessed and combined to create incentive packages for landowner activities. Some of these programs require information disclosure that may not be acceptable to some landowners in which case SRCAF will work with the Landowners to determine which programs would be most acceptable to them.

7. Data Handling and Storage —

The Sacramento River Conservation Area Forum office and staff will be responsible for data storage and handling. This program will allow Forum members to better assist landowners in participating in the maintenance and support of healthy river processes and a greater ability to guide the restoration and management process.

The SRCA staff will make presentations, disseminate reports, and share data generated with agencies, local governments, and stakeholders interested in the Sacramento River. Information gathered will be shared with other Sacramento River efforts such as the Sacramento River Watershed Program, the Sacramento River Portal, the Sacramento River Discovery Center, local watershed conservancy groups, agency personnel, local government agencies, and others.

It is anticipated that the research from this program will generate scientific findings that will be shared with the research community through publications and presentations. We will participate in the annual CALFED Science conference, the California Watershed Conference, Ecological Society of America Conference, and other technical conferences and symposia.

8. Information Value—

The conflicts between agriculture and ecosystem restoration are not unique to the Sacramento River. Better ways of integrating solutions to these problems are needed along virtually every river and stream in California. While there are some similarities with how problems are solved in wetland areas, the range and type of solutions are different than in riparian habitat ecosystems on rivers that support endangered species in their migratory corridors. Issues such as flood management, natural river meander processes, flow regimes, and large woody debris are treated significantly different on flowing rivers than wetland areas. The information gained through this process will help solve similar problems on streams throughout the West.

Information, from the Sacramento River GIS was developed as a unified database and planning tool to help organize spatially referenced data along 222 miles of the Sacramento River, will integrate the riverine/riparian, agricultural, and other ecosystems of the upper Sacramento Valley, and help to resolve large-scale and site-specific management questions. Information indexed in the system and currently available for query and analysis includes historical river meanders since 1896, geology, soil, projected erosion rates, and locations for the next 50 years, public property ownership, various flood lines, stream bank type, land use, and current and historical riparian vegetation cover types. In addition to meeting site specific biological survey needs, the new coverage and program tracking tools developed under this proposal would provide a more rigorous planning foundation for

Sacramento River Conservation Area Forum

integration with CALFED Program regional planning, restoration, implementation, monitoring, and performance evaluation.

The SRCAF is a public forum, and is committed to openly discussing this incentive and regulatory assurances process, during all phases of the grant program. In addition, members, staff, and participants of the SRCAF are active attendees of both the Working Landscapes sub-committee and the Ecosystem Restoration Program. Examples and solutions that we produce will be reported at those forums.

9. Public Involvement and Outreach —

The Mission Statement for the Sacramento River Conservation Area Forum (SRCAF) is to "bring communities, individuals, organizations, and agencies together along the Sacramento River to make resource management and restoration efforts more effective and sensitive to the needs of local communities." The Forum supports scientifically-based restoration efforts, serves as a round-table for sharing, a facilitator of solutions, and a partner for projects that protect both the natural values of the Sacramento River and the communities it runs through." The Performance Evaluation component will provide an instrument for monitoring social indicators, giving input to the SRCAF on whether they are achieving their goals and objectives for landowner support, education goals, agency coordination, corridor planning/ management, and will provide project review and help the SRCAF disseminate information and conduct public outreach.

Through the TAC, the SRCAF will review and comment on project studies to provide guidance for technical merit and consistency with the Handbook. SRCAF will include project information and reports in its public information program and coordinate with the CSUC Research Foundation, local RCDs, and Sustainable Conservation in conducting public workshops and outreach efforts. The SRCAF will facilitate use of its Project Tracking information for establishing a database for project monitoring.

The data, maps, permit and safe harbor information, demonstration site selection, outreach, and education efforts will all be available on the SRCAF website. As well as the complete listing of past, present, and future projects and information about the Sacramento River Monitoring Program, this site will become a "One-Stop" location for a variety of information about the River and the variety of programs, activities, and research being conducted there. Additionally, SRCAF will provide frequent updates at their public meetings, along with presentations and reports to various resource agencies.

B. Applicability to CALFED Bay-Delta Program and ERP Goals and priorities for this solicitation.

1. ERP Priorities -

In the CALFED Bay-Delta Program August 28, 2000 Record of Decision it states that successful implementation of the CALFED Program will affect some agricultural lands. "**CALFED Agencies will seek to implement their Program through technical and financial assistance to locally based, collaborative programs such as the Sacramento River Conservation Area/SB 1086 program.**" The Sacramento River Conservation Area Forum strives for protection and restoration of the Sacramento River meander corridor and, through this collaborative program, ensures that CALFED ERP goals and priorities will be addressed.

This proposal specifically deals with the issues that revolve around integrating agricultural activities and ecosystem restoration in the landscape of an alluvial river. Because of the variety of wildlife

Sacramento River Conservation Area Forum

inhabiting the riparian corridor, the importance of migratory continuity for endangered species and the prime soils needed for productive agriculture and a stable rural economy, conflicts do arise. As a part of the proposal, an evaluation of landowner's attitudes and knowledge will occur both before and after project activities that will help **"understand the relative effectiveness of different conservation based farming practices and systems, and their contribution to larger restoration efforts"**. Targeted pilot scale demonstration projects will allow assessments of these activities, provide the opportunity to adapt for local needs, and encourage others to participate in successful practices.

Many of the species referred in the "R" and "r" categories of the Multiple Species Conservation Strategy will benefit from key tasks in the proposal to provide both assurances and incentives that encourage farmers to **"develop and implement agricultural activities that benefit MSCS-covered species"**. Those species the SRCAF have identified as key species within the Sacramento River Corridor are: Giant Garter Snake, Bald Eagle, Bank Swallow, Least Bell's Vireo, Swainson's Hawk, Western Yellow Billed Cuckoo, Willow Flycatcher, Valley Elderberry Longhorn Beetle, and anadromous salmonids - particularly Winter-run Chinook. Pilot projects will investigate the feasibility for programs that protect and enhance some of these key species. The Burroughs property pilot project is in an area of giant garter snake habitat, and qualifies as a, **"pilot scale implementation and research project that conserves giant garter snakes --"**.

Task 2, **Regulatory Assurances--Identification of Workable Solutions that may be Implemented to Reduce the Disincentives on Farmers Associated with Conservation Practices**, investigates and implements an assurances program, such as a federal Safe Harbor Agreement or the state equivalent, the Natural Community Conservation Planning Act (NCCPA), to help **"facilitate permitting or regulatory assurances that support agricultural activities benefiting MSCS-covered species"**. A Safe Harbor or NCCP is a well respected program that, if enacted, would **"protect farmland that benefits MSCS-covered species and provide a buffer for restored habitats from adverse effects of encroaching incompatible development"**.

The SRCAF has facilitated and supported conservation easement acquisitions throughout the Conservation Area, and will continue to do so.

Giant Garter Snake Habitat: Irrigation districts play an important role in water supply issues, and can help provide information about GGS habitat while assuring confidentiality of private landowners. In turn, if irrigation districts had useful guidance on how water management could improve or compromise GGS habitat, they and the landowners could make good, locally-driven decisions about how to protect the species. The SRCAF will work with Sustainable Conservation and others to help coordinate with these districts to; 1) review scientific information and engage in discussions with USFWS and CDFG about the greatest opportunities for conservation on private lands from their perspective; 2) process and carry out surveys with the irrigation districts to gain information about GGS in their districts; 3) work towards developing recommendations about optimal habitat and water management to promote/protect habitat; 4) and help develop a landowner action plan.

At the Colusa National Wildlife Refuge the Western Ecological Research Center has been trapping and using searching methods and passively induced transponder (PIT) tags are being used in a study to permanently mark and establish a data base for giant garter snakes. The SRCAF would work with the Western Ecological Research Center to help facilitate further investigations into the use of radio telemetry in showing aspects of habitat use and movements that were previously poorly understood for this species. It has been determined that the snakes tend to be active far later into the fall than

Sacramento River Conservation Area Forum

previously believed. Seasonal searching and trapping methodology and timing changes for road, ditch, and levee maintenance in the rice fields these snakes inhabit will be encouraged.

Programs like this will assist in defining current distribution and abundance of giant garter snakes in their existing habitat and monitor the success of recovery efforts in the Sacramento Valley.

2. Relationship to Other Ecosystem Restoration Actions or Program Investments -

The proposed project addresses the following CVPIA goals and Anadromous Fish Restoration Program (AFRP) objectives:

1. Protect, restore, and enhance fish, wildlife, and associated habitats in the Central Valley and Trinity River basins of California;
2. Improve habitat for all life stages of anadromous fish by providing flows of suitable quality, quantity and timing, and improved physical habitat;
3. Involve landowners and partners in the implementation and evaluation of restoration actions.

Providing the scientific, technical, and practical assistance that landowners need to participate in ecosystem restoration will result in an increase of complex riparian habitat along the Sacramento River. This will improve habitat for fish and wildlife. Fish benefit from complex riparian areas that become flooded at high flows, slow floodwaters down, and provide refugia for young and juvenile fish (Sommer et al. 2001). Salmon reproduction will be aided by restoration of both riparian forests and the dynamic interactions between forest and channel/floodplain. Valley Elderberry Longhorn Beetle will benefit from the restoration of native habitat and the exclusion of non-native species (such as Argentine ants). Yellow-billed cuckoo will benefit from reduced habitat fragmentation and increased mature forest distribution and complexity. Bank swallows will benefit from eroding banks along active channels.

3. Additional Information for Proposals Involving Land or Easement Acquisition -

This proposal does not involve any land acquisitions at this time.

C. Qualifications and Organization.

The Sacramento River Conservation Area Forum works closely with several partners on the Sacramento River. The Nature Conservancy, River Partners, CDFG, USFWS, State Parks, CDWR, WCB, USBLM, USBR, USACOE, and others work through the SRCAF for review of projects within the Conservation Area. Nineteen local, state and federal agencies have signed our MOA, and several others are members of our SB1086 Advisory Council. All seven counties that have jurisdiction within the Conservation Area have members on the SRCAF Board of Directors. Seven members are also members of other local organizations, including water and reclamation districts. Other stakeholders that we coordinate with on a regular basis include: the Sacramento Valley Landowners Association, Sacramento River Preservation Trust, Northern California Water Association, several Irrigation Districts, County Resource Conservation Districts, Family Water Alliance, County and State Farm Bureaus, several conservancies, including those on Mill Creek, Deer Creek, Cottonwood Creek, and Butte Creek and regional environmental organizations such as the Audubon Society, Point Reyes Bird Observatory, and the Pacific Coast Fisherman's Association.

The Sacramento River Conservation Area Forum currently disseminates a quarterly newsletter, conducts workshops, provides education and outreach, and will be the organization responsible for conducting all of our outreach to these various organizations. A full Information Dissemination Plan

Sacramento River Conservation Area Forum

will be developed and implemented by their office. For further information see Section (7) Data Handling, Storage, and Dissemination.

Program Manager

Burt Bundy*, Sacramento River Conservation Area Forum

Administrative Manager

Kristin Carter, MA* CSU Chico

Program Coordinator

Beverley Anderson-Abbs*, Sacramento River Conservation Area Forum

Outreach Coordinator

Ellen Gentry*, Sacramento River Conservation Area Forum

Geographic Information

Department of Water Resources

CSU Chico Geographic Information Center*

Social Indicators

Mark Lubbell, UC Davis*

Jim Fletcher, CSU Chico*

Agency Partners

Stacy Cepello, DWR*, CDFG, USFWS

Subcontractors

Department of Water Resources

UC Davis

Sustainable Conservation

- All of our subcontractors were chosen because of their vast experience on the Sacramento River and within their area of expertise.
- There are no potential problems regarding the principal participants' availability to complete their work within the projected timeline.

*Currently involved in Sacramento River research.

D. Cost.

1. Budget - see attached budget sheet

2. Cost share and matching funds -

Sacramento River Conservation Area Forum Long Term Funding

Starting in 1999, through funding originally from CVPIA, and later through CALFED, the MOA authorizing the organization of the SRCAF as a non-profit entity was signed by 19 State and Federal agencies. The operational funds for the organization have been routed through the Ecosystem Restoration Program since that time. Under the current grant, the SRCAF has funding secured through 2006. Additionally, funding was included in the 2005 ERP two year work plan for 2007. The SRCAF anticipates ongoing funding through either CVPIA or CALFED, and staff recognizes that some additional time will be shared from that program with this proposed work effort. DWR also provides matching office space, administrative assistance, and some technical support to the SRCAF.

3. Long-term funding strategy

Working Landscapes Proposal Long Term Funding for Implementation and Monitoring

The SRCAF was developed from discussions emanating out of the SB1086 Advisory Council which was established through legislation in 1986. The State Resources Agency through the Department of Water Resources provided funding for the planning, coordination, and technical information needed to develop the organizational structure, supply the GIS, and craft a technical manual, the Sacramento River Conservation Area Handbook. The funding, and more importantly, the understanding and support of the Resources Agency and the Department of Water Resources, has been consistent through all the administrations since 1986.

This proposal relies on this long term commitment from the State Resources Agency and CALFED to provide the organizational structure and staff for the Sacramento River Conservation Area Forum to administer and implement the grant. For specific tasks, funding from this grant will provide for planning, development, outreach and education, gathering of technical information for programmatic and specific projects, and implementation and administration of pilot projects. For some of the specific site investigations, there may be fees charged to recoup costs. The Conservation Banking Program could be developed with an assessment tied to preservation/ mitigation credits or property management for long term administration. The SRCAF does have the authority to hold fee title or easement ownership. For many years, discussions within the SRCAF have considered the establishment of an endowment or revolving fund tied to all projects for unanticipated costs related to monitoring and local impacts. Many board members have supported such an approach. The SRCAF would continue efforts to make the project self-supporting.

Attachment 1

E. Compliance with Standard Terms and Conditions.

Applicant is willing and able to comply with the terms of the sample ERP grant agreement template, except we request consideration of the following changes:

1. As directed by the PSP, Applicant's proposed budget presents an estimate of its actual costs for accomplishing the tasks and deliverables that make up the entire work..

Exhibit B (Items 1, 2, and 5.E) suggests that a grantee must separately track and invoice for its actual costs on a "task-by-task" basis. Exhibit B (Item 6) would also withhold 10% from the reimbursement of all of a grantee's costs, even from the costs of tasks which have been completed and accepted, until the entire contract is completed.

If a contract consists of the performance of "separate and distinct tasks," the State Contracting Manual (Section 7.33) provides that funds withheld for a particular task may be paid upon completion of that task. If the tasks in Applicant's budget are deemed to be "separate and distinct," then Applicant as Grantee should be reimbursed for 100% of the costs of tasks as they are completed and accepted. Conversely, if the tasks in the proposed budget are not deemed to be "separate and distinct," then we ask you consider not having the Grantee separately track and invoice costs "task-by-task."

In the latter situation we suggest consideration that the Grantee accept a 10% retention from payment until all work has been completed, but Applicant will not then also need to separate its costs by tasks which are not "separate and distinct."

2. Exhibit B (Items 5.A, 5.C, 5.E, and 5.F) require submission of varying source documentation to the awarding agency in addition to an itemized invoice.

Applicant is a non-profit public-benefit corporation and an auxiliary organization of the California State University, Chico. Applicant's compliance with the terms of contracts and grants and with governing laws and regulations and Applicant's internal control over financial reporting (invoicing) are tested annually by independent auditors in accordance with Government Auditing Standards. Applicant as Grantee could invoice only for its actual costs. Applicant must retain and make available for examination by funding agencies and auditors all source documentation supporting its reported costs.

Applicant does not in its ordinary business practice gather paper copies of source documentation, therefore we request that as a Grantee we not be required to undertake this burden when these other means are available to assure the veracity and accuracy of Applicant's invoicing.

Applicant is prepared to offer alternative language to the above-specified clauses of the sample ERP grant agreement template upon request.

Attachment 2

F. Literature Cited

Project Description

State of California Resources Agency, 2002 Removing Barriers to Restoration. Report to the Biodiversity Council, Sacramento, CA, 38p.

Hanski, I. 2001. Spatially realistic theory of metapopulation ecology. *Naturwissenschaften* 88:372-381.

McGarigal, K. 2002. Landscape pattern metrics. Pages 1135-1142 in W. W. Peigorsch, editor.

Encyclopedia of Environmentrics Volume 2. John Wiley & Sons, Sussex, England.

McGarigal, K., S. A. Cushman, M. C. Neel, and E. Ene. 2002. FRAGSTATS: spatial pattern analysis program for categorical maps. University of Massachusetts, Amherst, MA, USA.

www.umass.edu/landeco/research/fragstats/fragstats.html.

CALFED Bay-Delta Program. 2000a. Flow regime requirements for habitat restoration along the Sacramento River between Colusa and Red Bluff. Integrated Storage Investigation.

Roberts, M.D., Peterson, D.R., Jukkola, D.E. and V.L. Snowden. 2001. A pilot investigation of cottonwood recruitment on the Sacramento River. The Nature Conservancy, Sacramento River Project.

Goals and Objectives

Greco, SE. 1999. Monitoring riparian landscape change and modeling habitat dynamics of the yellow-billed cuckoo on the Sacramento River, California. Ph.D. Dissertation, Graduate Group in Ecology, Office of Graduate Studies, University of California, Davis, CA. 302p.

Greco, SE, AK Fremier, EW Larsen, & C Lowney. *In prep.* a. Geographic modeling of floodplain age and the distribution of riparian plant species on the Sacramento River, California, USA.

Greco, SE & RE Plant. 2003. Temporal Mapping of Riparian Landscape Change on the Sacramento River, Miles 196-218, California, USA. *Landscape Research* 28(4):405-426.

Greco, SE, RE Plant, & RH Barrett. 2002. Geographic modeling of temporal variability in habitat quality of the yellow-billed cuckoo on the Sacramento River, miles 196-219, California. Pp. 183-195 in J. M. Scott, P. J. Heglund, M. Morrison, et al. (editors). *Predicting Species Occurrences: Issues of Accuracy and Scale*. Island Press, Covelo, CA.

Approach/Scope of Work

Alpert, P., F.T. Griggs and D.R. Peterson. 1999. Riparian forest restoration along large rivers: initial results from the Sacramento River Project. *Restoration Ecology* 7: 360-368.

Holl, K. D. and E. E. Crone. 2004. Local vs. landscape factors affecting restoration of riparian understory plants. *Journal of Applied Ecology* 41:922-933.

Holl, K. D. and J. Cairns, Jr. 2002. Monitoring ecological restoration. Pages 413-444 in *Handbook of Ecological Restoration*, vol. I, ed. M. Perrow and A.J. Davy. Cambridge University Press: Cambridge.

Sacramento River Conservation Area Forum

Small S, J DeStaebler, GR Geupel, & A King. 1999. Songbird response to riparian restoration on the Sacramento River System: Report of the 1997 and 1998 Field Seasons to TNC and the USFWS. Point Reyes Bird Observatory.

Wood, D.M. 2003a. Pattern of woody species recruitment on point bars on the middle Sacramento River. Report to TNC published online at:
<http://www.sacramentoriverportal.org/reports/beehive/apdx6.pdf>. Manuscript for Forest Ecology and Management in prep.

Wood, D.M. 2003b. The distribution and composition of woody species in riparian forests along the middle Sacramento River, California. Preliminary report to TNC published online at:
<http://www.sacramentoriverportal.org/reports/beehive/apdx5.pdf>.

Wood, D.M. 2003c. Factors affecting planted species at restoration sites. Unpublished report to TNC.
Zavaleta, E.S., R.J. Hobbs, and H.A. Mooney. 2001. Viewing invasive species removal in a whole ecosystem context. *Trends in Ecology and Evolution* 16:454-459.

CALFED. 2000a. Programmatic Record of Decision.

CALFED. 2000b. Volume II, Ecosystem Restoration Program Plan, Sacramento River Ecological Management Zone.

Department of Water Resources. 2004a. Bank Survey of Reach 3, Chico Landing to Colusa, Sacramento River, CA. Memorandum Report from Adam Henderson and Stacy Cepello, California Department of Water Resources, Northern District, Red Bluff, CA, to Dwight Russell.

Department of Water Resources. 2004b. Bank Survey of Reach 2, Red Bluff to Chico Landing, Sacramento River, CA. Memorandum Report from Adam Henderson and Stacy Cepello, California Department of Water Resources, Northern District, Red Bluff, CA, to Dwight Russell.

Department of Water Resources. 2004c. Tracking Large Woody Debris, Red Bluff to Colusa Sacramento River, CA. Memorandum Report from Adam Henderson and Stacy Cepello, California Department of Water Resources, Northern District, Red Bluff, CA, to Dwight Russell.

Department of Water Resources. 2003. SP-G2: Effects of Project Operations on Geomorphic Processes Downstream of Oroville Dam: Task 1.2 - Physiographic Setting and Mesohabitat, Appendix B. Memorandum Report from Koll Buer, California Department of Water Resources, Northern District, Red Bluff, CA, to Surface Water Resources, Inc.

Henderson, Adam. 2003. Tracking Large Woody Debris in the Sacramento River: An Application of Radio Telemetry. Master's thesis, California State University, Chico.

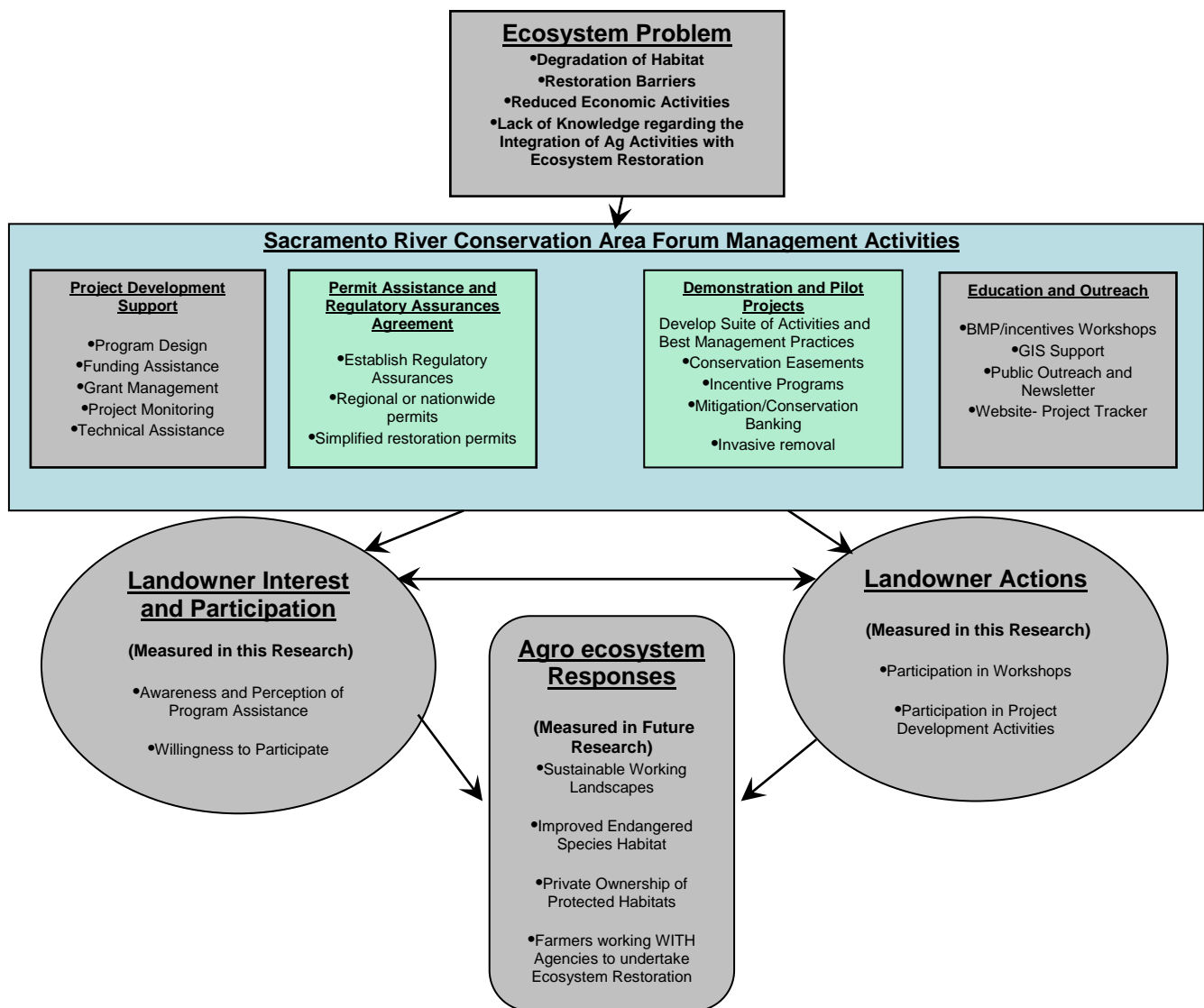
USFWS. 1992. Shaded riverine aquatic cover of the Sacramento River system: Classification as resource category 1 under the FWS mitigation policy. Sacramento, CA: U.S. Department of the Interior, U.S. Fish and Wildlife Service.

Attachment 4
Conceptual Models - Figures 1 and 2

Conceptual Model
Figure 1

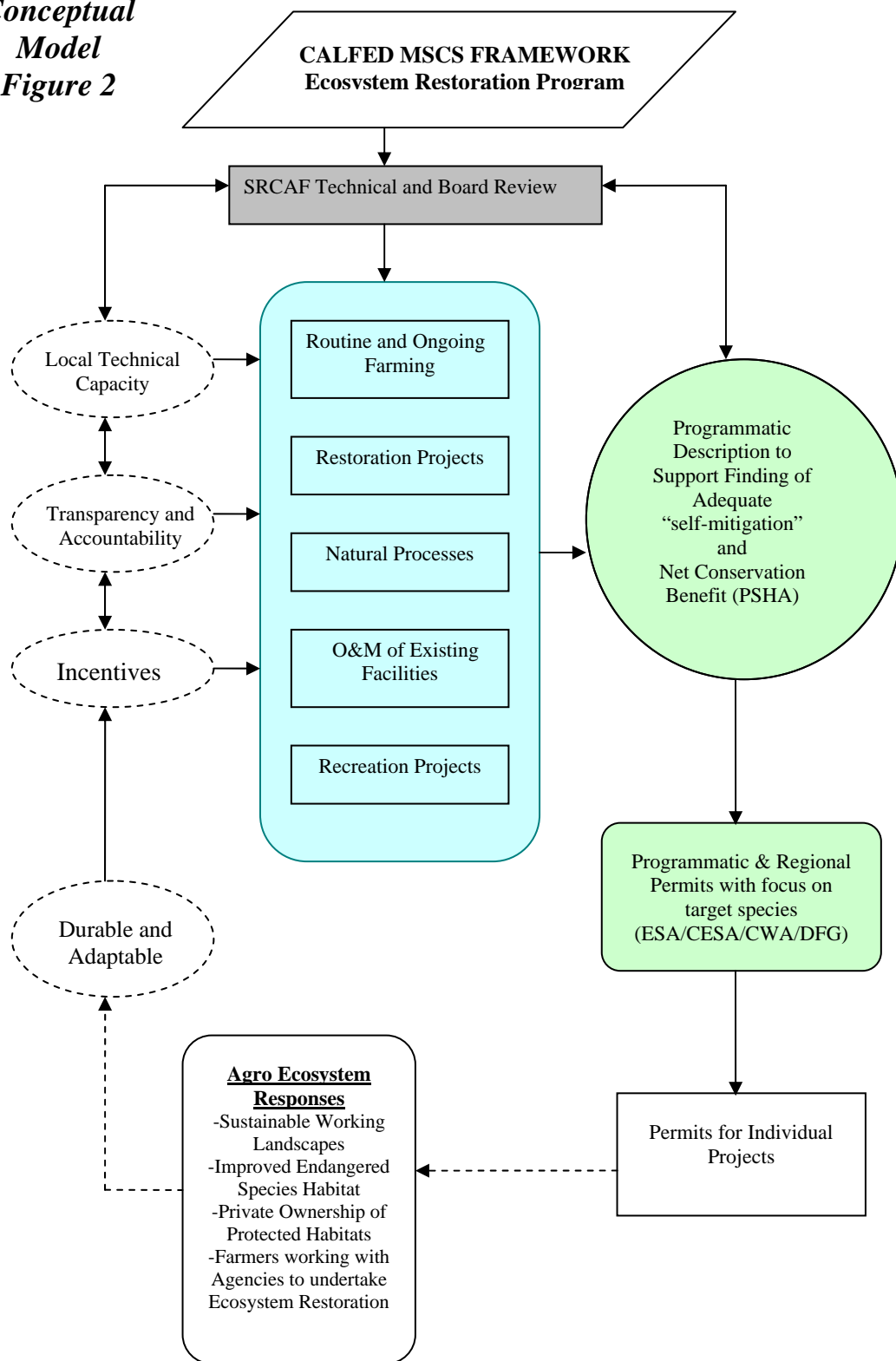
-Green boxes indicate key components of proposal.

Sacramento River Conservation Area Forum – Conceptual Model



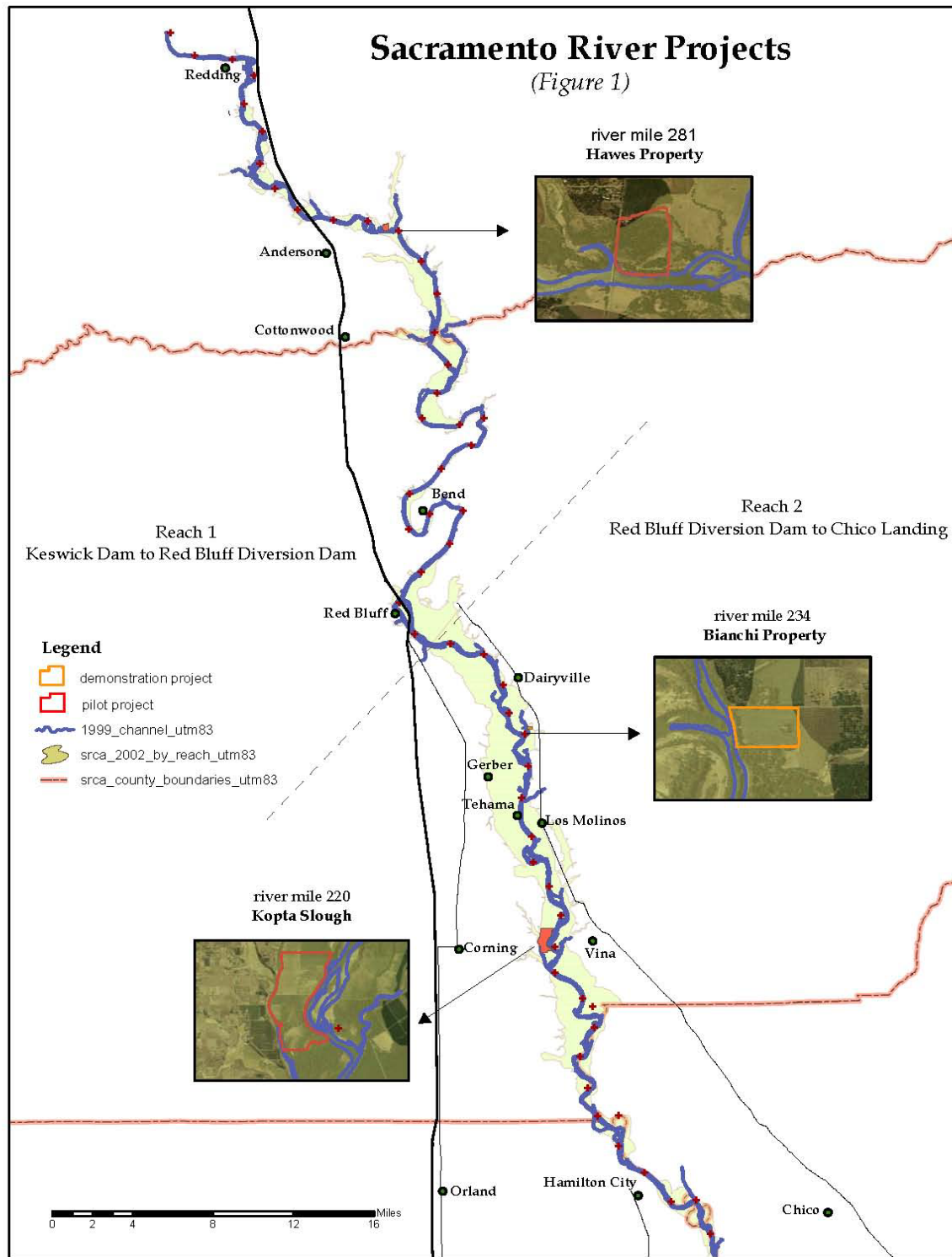
Attachment 4

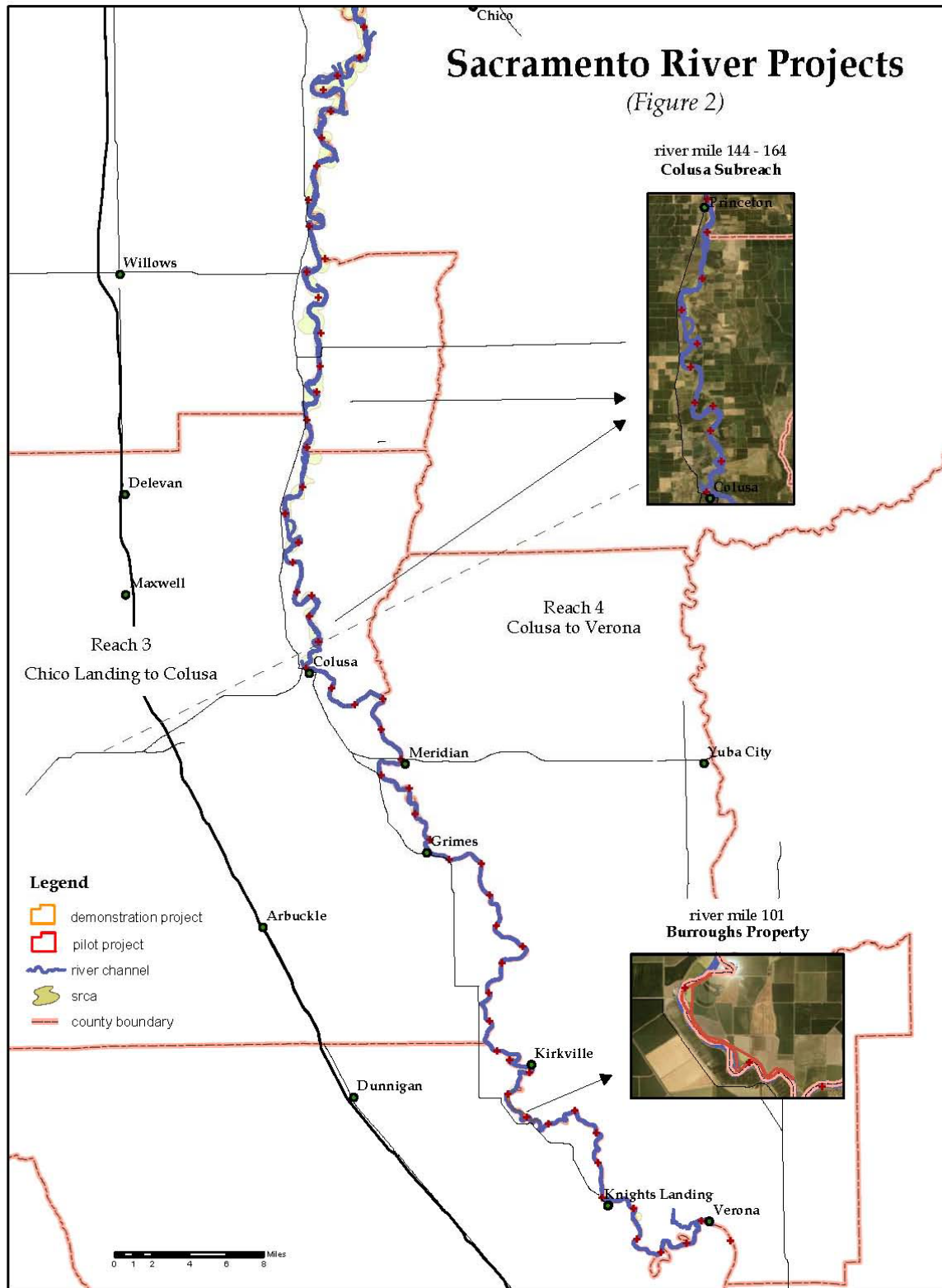
Conceptual
Model
Figure 2



Attachment 5

Sacramento Conservation Area Maps – Figure 1 and 2





Tasks And Deliverables

Task ID	Task Name	Start Month	End Month	Personnel Involved	Deliverables
1.1 Project Management	Oversee project and coordinate efforts throughout the SRCAF	1	36	Bundy, Burt Anderson-Abbs, Beverley Gentry, Ellen Cooper-Carter, Kristin	1) Accurate and efficient project management 2) Quarterly and annual technical reports 3) Coordination with other grant programs 4) A process to actively implement adaptive management.
1.2 Project Management	Develop sub-contract agreements and invoicing	1	36	Bundy, Burt Anderson-Abbs, Beverley Gentry, Ellen Cooper-Carter, Kristin	1) Finalized sub-contracts 2) Invoice reports 3) Quarterly and final project reports
1.3 Project Management	Performance Evaluation	1	36	Bundy, Burt Anderson-Abbs, Beverley Gentry, Ellen Cooper-Carter, Kristin Lubell, Mark Fletcher, Jim	1) Develop, deliver, and analyze Landowner Panel Surveys to measure the following program objectives: views/knowledge about conservation programs, participation in conservation programs, trust in policy stakeholders, environmental

					<p>behaviors, and standard measures of demographics, and general political attitudes</p> <p>2) Upgrade Project Tracking Database and collect project management information</p> <p>3) Link and analyze cross referenced data to evaluate changes in stakeholder attitudes and behaviors over time</p>
2.1 Regulatory Assurances	Vegetation Classification	1	12	<p>Bundy, Burt</p> <p>Anderson-Abbs,</p> <p>Beverley</p> <p>Gentry, Ellen</p> <p>Cepello, Stacy</p>	<p>1) Purchase one-foot resolution, stereo paired, aerial, color photographs and ortho-rectified mosaics</p> <p>2) Vegetation classification from aerial interpretation and ground truthing will be completed and documented for approximately 60,000 acres using CNPS's VRAP</p>
2.2 Regulatory Assurances	Define habitat restoration needs to accomplish Net Conservation	1	24	<p>Bundy, Burt</p> <p>Anderson-Abbs,</p> <p>Beverley</p> <p>Cepello, Stacy</p>	<p>1) Identify habitat restoration needs for the target species of concern</p>

	Benefit			Kester, Susan	within the SRCA 2) SRCA GIS coverage (layers) will be completed for land cover (natural and agricultural vegetation mapping, with habitat attributes), landuse, and ownership by parcel
2.3 Regulatory Assurances	SRCA Safe Harbor Agreement	1	24	Bundy, Burt Anderson-Abbs, Beverley Gentry, Ellen Cepello, Stacy Kester, Susan	1) Final biological opinions for MSCS species to be covered under the agreement 2) A Programmatic Safe Harbor Agreement, or other assurances, that is acceptable to the resource agencies and local farmers.
2.4 Regulatory Assurnaces	Outreach and Education	1	36	Bundy, Burt Anderson-Abbs, Beverley Gentry, Ellen Kester, Susan	1) Articles in our quarterly newsletter 2) Press releases as needed 3) At least 3 workshops and landowner meetings
2.5 Regulatory Assurances	Administer Programmatic Safe Harbor Agreement	18	36	Bundy, Burt Anderson-Abbs, Beverley Gentry, Ellen Cooper-Carter, Kristin	1) Biological baseline surveys 2) Contract for and oversee threatened and endangered species surveys of a

				Cepello, Stacy	private sector consultant 3) Updated Project Tracker website with added monitoring component.
2.6 Regulatory Assurances	Permit Coordination for restoration projects	1	36	Bundy, Burt Anderson-Abbs, Beverley Gentry, Ellen	1) Coordinated permit process for restoration projects.
3.1 Landowner Incentives	Develop library of available conservation and restoration programs	1	12	Bundy, Burt Anderson-Abbs, Beverley Gentry, Ellen	1) Library of available conservation programs
3.2 Landowner Incentives	Outreach and Education for landowner incentives	1	36	Bundy, Burt Anderson-Abbs, Beverley Gentry, Ellen	1) At least 2 workshops and presentations per year coordinated with county RCDs, Farm Bureaus, and local officials.
3.3 Landowner Incentives	Individual Conservation Plans for pilot and demonstration projects	1	36	Bundy, Burt Anderson-Abbs, Beverley Gentry, Ellen	1) Demonstration Project--Complete removal of invasive plant species from the riparian area of landowner's property, with plans for restoration with native vegetation. 2) Pilot Projects--Phase 1:Scope and feasibility report for each property. Phase 2:Habitat restoration plan

					and coordinated permit application for at least one property.
3.4 Landowner Incentives	Provide Technical support for conservation and restoration programs	1	36	Bundy, Burt Anderson-Abbs, Beverley Gentry, Ellen Cepello, Stacy	1) Coordinated technical support for landowners interested in habitat restoration
3.5 Landowner Incentives	Investigate new incentive options for conservation and restoration on private property	1	36	Bundy, Burt Anderson-Abbs, Beverley Gentry, Ellen Cepello, Stacy	1) The SRCAF will continue to advocate the development of new innovative incentive driven programs that encourage farmers to preserve and restore habitat

Total Project Budget Summary by Task and by Fiscal Year

<p>Note: This budget summary automatically links to the costs and totals on the "Budget Detail" worksheet. DO NOT CHANGE FORMULAS OR ENTER NUMBERS INTO ANY CELLS EXCEPT THE SHADED CELLS for "Cost Share" and "Other Matching Funds"</p>				
BUDGET SUMMARY	Total Amount for Year 1	Total Amount for Year 2	Total Amount for Year 3	Total Amount for All Years
Total Costs for Task One	\$ 111,688.78	\$ 78,885.92	\$ 102,930.53	\$ 293,505.23
Total Costs for Task Two	\$ 1,005,834.51	\$ 373,399.08	\$ 297,339.69	\$ 1,676,573.28
Total Costs for Task Three	\$ 72,145.50	\$ 68,683.23	\$ 37,695.00	\$ 178,523.73
Total Costs for Task Four	\$ -	\$ -	\$ -	\$ -
Total Costs for Task Five	\$ -	\$ -	\$ -	\$ -
Total Costs for Task Six	\$ -	\$ -	\$ -	\$ -
Total Costs for Task Seven	\$ -	\$ -	\$ -	\$ -
Total Costs for Task Eight	\$ -	\$ -	\$ -	\$ -
Total Costs for Task Nine	\$ -	\$ -	\$ -	\$ -
Total Costs for Task Ten	\$ -	\$ -	\$ -	\$ -
Total Costs for Task Eleven	\$ -	\$ -	\$ -	\$ -
Total Costs for Task Twelve	\$ -	\$ -	\$ -	\$ -
Total Costs for Task Thirteen	\$ -	\$ -	\$ -	\$ -
Total Costs for Task Fourteen	\$ -	\$ -	\$ -	\$ -
Total Costs for Task Fifteen	\$ -	\$ -	\$ -	\$ -
Total Costs for Project Tasks	\$ 1,189,668.79	\$ 520,968.24	\$ 437,965.22	\$ 2,148,602.25
1/Cost Share	\$ 50,000.00	\$ 50,000.00	\$ 50,000.00	\$ 150,000.00
2/ Other Matching Funds	\$ 100,000.00	\$ 100,000.00	\$ 100,000.00	\$ 300,000.00
<p>1/ <i>Cost share funds</i> are specifically dedicated to your project and can include private and other State and Federal grants. Any funds listed in this line must be further described in the text of your proposal (see Chapter 3, Section D, of the PSP document)</p>				
<p>2/ <i>Other matching funds</i> include other funds invested consistent with your project in your project area for which the ERP grant applicant is not eligible. Any funds listed in this line must be further described in the text of your proposal (see Chapter 3, Section D, of the PSP document)</p>				

Applicant Name

1/ Indicate your rate, and change formula in column immediately to the right of this cell
2/ Travel expenses and per diem must be at rates specified by the Department of Personnel Administration. The contractor is required to maintain travel receipts and records for auditing purposes. No travel out of the state of California shall be reimbursed unless prior written authorization is obtained from the State.
3/ Please provide a list and cost of major equipment (\$5,000 or more) to be purchased, and complete "Equipment Detail" Worksheet
4/ Please list each subcontractor and amounts (if subcontractor not selected yet, use function like "ditch construction subcontractor")
5/ Indicate rate in column immediately to the right of this cell; and provide a description of what expenses are covered by overhead. If overhead is > 15% must provide justification

Detailed Budget Breakdown by Task and by Fiscal Year

BUDGET FOR TASK TWO	TOTAL AMOUNT TASK 2 All Years	Year 1			Year 2			Year 3		
		Amount per hour	Number of Hours	Total Amount for Year 1	Amount per hour	Number of Hours	Total Amount for Year 2	Amount per hour	Number of Hours	Total Amount for Year 3
Personnel										
Bundy, Burt	\$ 31,112.50	\$ 35.00	300	\$ 10,500.00	\$ 36.85	250	\$ 9,212.50	\$ 38.00	300	\$ 11,400.00
Anderson-Abbs, Beverly	\$ 22,155.00	\$ 23.00	300	\$ 6,900.00	\$ 24.85	300	\$ 7,455.00	\$ 26.00	300	\$ 7,800.00
Gentry, Ellen	\$ 3,160.00	\$ 14.50	50	\$ 725.00	\$ 15.85	100	\$ 1,585.00	\$ 17.00	50	\$ 850.00
Student Interns	\$ 19,440.00	\$ 13.00	480	\$ 6,240.00	\$ 13.50	480	\$ 6,480.00	\$ 14.00	480	\$ 6,720.00
Cooper-Carter, Kristin	\$ 14,710.80	\$ 36.72	130	\$ 4,773.60	\$ 37.72	130	\$ 4,903.60	\$ 38.72	130	\$ 5,033.60
	\$ -	\$ -		\$ -	\$ -		\$ -	\$ -		\$ -
	\$ -	\$ -		\$ -	\$ -		\$ -	\$ -		\$ -
	\$ -	\$ -		\$ -	\$ -		\$ -	\$ -		\$ -
	\$ -	\$ -		\$ -	\$ -		\$ -	\$ -		\$ -
	\$ -	\$ -		\$ -	\$ -		\$ -	\$ -		\$ -
	\$ -	\$ -		\$ -	\$ -		\$ -	\$ -		\$ -
Personnel Subtotal	\$ 90,578.30			\$ 29,138.60			\$ 29,636.10			\$ 31,803.60
^{1/} Benefits as percent of salary	41%			\$11,946.83			\$12,150.80			\$13,039.48
Personnel Total (salary + benefits)	\$127,715.40			\$41,085.43			\$41,786.90			\$44,843.08
Other Costs	Total All Years			Total Year 1			Total Year 2			Total Year 3
Operating Expenses: (ex: seed, plant materials, irrigation supplies, software, office supplies, etc)	\$ 7,500.00			\$ 2,500.00			\$ 2,500.00			\$ 2,500.00
2/ Travel and Per Diem	\$ 12,300.00			\$ 3,910.00			\$ 4,048.00			\$ 4,342.00
3/ Equipment/Laptop computers/GPS	\$ 11,898.00			\$ 6,500.00			\$ 3,200.00			\$ 2,198.00
4/ Sub-Contractor-Lidar	\$ 500,000.00			\$ 500,000.00						
4/ Sub-Contractor-Sustainable Conservation/Permit Coordination	\$ 24,000.00			\$ 10,000.00			\$ 10,000.00			\$ 4,000.00
4/ Sub-Contractor-Sustainable Conservation/Susan Kester	\$ 76,031.00			\$ 41,000.00			\$ 35,031.00			
4/ Sub-Contractor-DWR Riparian Mapping/GIS	\$ 273,300.00			\$ 175,000.00			\$ 76,000.00			\$ 22,300.00
4/ Sub-Contractor-DWR/Wildlife Surveys	\$ 364,400.00			\$ 58,200.00			\$ 138,600.00			\$ 167,600.00
Other Costs Subtotal	\$ 1,269,429.00			\$ 797,110.00			\$ 269,379.00			\$ 202,940.00
^{5/} Overhead Percentage (Applied to Personnel & Other Costs)	20%			\$ 167,639.09			\$ 62,233.18			\$ 49,556.62
Total Costs for Task Two	\$ 1,676,573.28			\$1,005,834.51			\$ 373,399.08			\$ 297,339.69

- 1/ Indicate your rate, and change formula in column immediately to the right of this cell
- 2/ Travel expenses and per diem must be at rates specified by the Department of Personnel Administration. The contractor is required to maintain travel receipts and records for auditing purposes. No travel out of the state of California shall be reimbursed unless prior written authorization is obtained from the State.
- 3/ Please provide a list and cost of major equipment (\$5,000 or more) to be purchased, and complete "Equipment Detail" Worksheet
- 4/ Please list each subcontractor and amounts (if subcontractor not selected yet, use function like "ditch construction subcontractor")
- 5/ Indicate rate in column immediately to the right of this cell; and provide a description of what expenses are covered by overhead. If overhead is > 15% must provide justification

BUDGET FOR TASK THREE	TOTAL AMOUNT TASK 3 All Years	Year 1			Year 2			Year 3		
		Amount per hour	Number of Hours	Total Amount for Year 1	Amount per hour	Number of Hours	Total Amount for Year 2	Amount per hour	Number of Hours	Total Amount for Year 3
Personnel										
Bundy, Burt	\$ 23,812.50	\$ 35.00	200	\$ 7,000.00	\$ 36.85	250	\$ 9,212.50	\$ 38.00	200	\$ 7,600.00
Anderson-Abbs, Beverly	\$ 22,155.00	\$ 23.00	300	\$ 6,900.00	\$ 24.85	300	\$ 7,455.00	\$ 26.00	300	\$ 7,800.00
Gentry, Ellen	\$ 3,160.00	\$ 14.50	50	\$ 725.00	\$ 15.85	100	\$ 1,585.00	\$ 17.00	50	\$ 850.00

Applicant Name

[illegible]

Proposal Number
Proposal Name

Detailed Budget Breakdown by Task and by Fiscal Year

Applicant Name

	\$ -	\$ -	\$ -	\$ -	\$ -	\$ -	\$ -
Personnel Subtotal	\$ -		\$ -		\$ -		\$ -
1/ Benefits as percent of salary			\$0.00		\$0.00		\$0.00
Personnel Total (salary + benefits)	\$0.00		\$0.00		\$0.00		\$0.00
Other Costs	Total All Years		Total Year 1		Total Year 2		Total Year 3
Operating Expenses: (ex: seed, plant materials, irrigation supplies, software, office supplies, etc)	\$ -		\$ -		\$ -		\$ -
2/ Travel and Per Diem	\$ -		\$ -		\$ -		\$ -
3/ Equipment	\$ -		\$ -		\$ -		\$ -
4/ Sub-Contractor	\$ -		\$ -		\$ -		\$ -
4/ Sub-Contractor	\$ -		\$ -		\$ -		\$ -
4/ Sub-Contractor	\$ -		\$ -		\$ -		\$ -
4/ Sub-Contractor	\$ -		\$ -		\$ -		\$ -
4/ Sub-Contractor	\$ -		\$ -		\$ -		\$ -
Other Costs Subtotal	\$ -		\$ -		\$ -		\$ -
5/ Overhead Percentage (Applied to Personnel & Other Costs)			\$ -		\$ -		\$ -
Total Costs for Task Four	\$ -		\$ -		\$ -		\$ -

1/ Indicate your rate, and change formula in column immediately to the right of this cell

2/ Travel expenses and per diem must be at rates specified by the Department of Personnel Administration. The contractor is required to maintain travel receipts and records for auditing purposes. No travel out of the state of California shall be reimbursed unless prior written authorization is obtained from the State.

3/ Please provide a list and cost of major equipment (\$5,000 or more) to be purchased, and complete "Equipment Detail" Worksheet

4/ Please list each subcontractor and amounts (if subcontractor not selected yet, use function like "ditch construction subcontractor")

5/ Indicate rate in column immediately to the right of this cell; and provide a description of what expenses are covered by overhead. If overhead is > 15% must provide justification

BUDGET FOR TASK FIVE	TOTAL AMOUNT TASK 5 All Years	Year 1		Year 2		Year 3	
		Amount per hour	Number of Hours	Amount per hour	Number of Hours	Amount per hour	Number of Hours
Personnel							
	\$ -	\$ -	\$ -	\$ -	\$ -	\$ -	\$ -
	\$ -	\$ -	\$ -	\$ -	\$ -	\$ -	\$ -
	\$ -	\$ -	\$ -	\$ -	\$ -	\$ -	\$ -
	\$ -	\$ -	\$ -	\$ -	\$ -	\$ -	\$ -
	\$ -	\$ -	\$ -	\$ -	\$ -	\$ -	\$ -
	\$ -	\$ -	\$ -	\$ -	\$ -	\$ -	\$ -
	\$ -	\$ -	\$ -	\$ -	\$ -	\$ -	\$ -
	\$ -	\$ -	\$ -	\$ -	\$ -	\$ -	\$ -
	\$ -	\$ -	\$ -	\$ -	\$ -	\$ -	\$ -
	\$ -	\$ -	\$ -	\$ -	\$ -	\$ -	\$ -
	\$ -	\$ -	\$ -	\$ -	\$ -	\$ -	\$ -
	\$ -	\$ -	\$ -	\$ -	\$ -	\$ -	\$ -
Personnel Subtotal	\$ -		\$ -		\$ -		\$ -
1/ Benefits as percent of salary			\$0.00		\$0.00		\$0.00
Personnel Total (salary + benefits)	\$0.00		\$0.00		\$0.00		\$0.00

Proposal Number
Proposal Name

Detailed Budget Breakdown by Task and by Fiscal Year

Applicant Name

Other Costs	Total All Years			Total Year 1			Total Year 2			Total Year 3
Operating Expenses: (ex: seed, plant materials, irrigation supplies, software, office supplies, etc)	\$ -			\$ -			\$ -			\$ -
2/ Travel and Per Diem	\$ -			\$ -			\$ -			\$ -
3/ Equipment	\$ -			\$ -			\$ -			\$ -
4/ Sub-Contractor	\$ -			\$ -			\$ -			\$ -
4/ Sub-Contractor	\$ -			\$ -			\$ -			\$ -
4/ Sub-Contractor	\$ -			\$ -			\$ -			\$ -
4/ Sub-Contractor	\$ -			\$ -			\$ -			\$ -
4/ Sub-Contractor	\$ -			\$ -			\$ -			\$ -
Other Costs Subtotal	\$ -			\$ -			\$ -			\$ -
^{5/} Overhead Percentage (Applied to Personnel & Other Costs)				\$ -			\$ -			\$ -
Total Costs for Task Five	\$ -			\$ -			\$ -			\$ -

1/ Indicate your rate, and change formula in column immediately to the right of this cell

2/ Travel expenses and per diem must be at rates specified by the Department of Personnel Administration. The contractor is required to maintain travel receipts and records for auditing purposes. No travel out of the state of California shall be reimbursed unless prior written authorization is obtained from the State.

3/ Please provide a list and cost of major equipment (\$5,000 or more) to be purchased, and complete "Equipment Detail" Worksheet

4/ Please list each subcontractor and amounts (if subcontractor not selected yet, use function like "ditch construction subcontractor")

5/ Indicate rate in column immediately to the right of this cell; and provide a description of what expenses are covered by overhead. If overhead is > 15% must provide justification

BUDGET FOR TASK SIX	TOTAL AMOUNT TASK 6 All Years	Year 1			Year 2			Year 3		
		Amount per hour	Number of Hours	Total Amount for Year 1	Amount per hour	Number of Hours	Total Amount for Year 2	Amount per hour	Number of Hours	Total Amount for Year 3
Personnel										
	\$ -	\$ -		\$ -	\$ -		\$ -	\$ -		\$ -
	\$ -	\$ -		\$ -	\$ -		\$ -	\$ -		\$ -
	\$ -	\$ -		\$ -	\$ -		\$ -	\$ -		\$ -
	\$ -	\$ -		\$ -	\$ -		\$ -	\$ -		\$ -
	\$ -	\$ -		\$ -	\$ -		\$ -	\$ -		\$ -
	\$ -	\$ -		\$ -	\$ -		\$ -	\$ -		\$ -
	\$ -	\$ -		\$ -	\$ -		\$ -	\$ -		\$ -
	\$ -	\$ -		\$ -	\$ -		\$ -	\$ -		\$ -
	\$ -	\$ -		\$ -	\$ -		\$ -	\$ -		\$ -
	\$ -	\$ -		\$ -	\$ -		\$ -	\$ -		\$ -
Personnel Subtotal	\$ -			\$ -			\$ -			\$ -
^{1/} Benefits as percent of salary				\$0.00			\$0.00			\$0.00
Personnel Total (salary + benefits)	\$0.00			\$0.00			\$0.00			\$0.00
Other Costs	Total All Years			Total Year 1			Total Year 2			Total Year 3
Operating Expenses: (ex: seed, plant materials, irrigation supplies, software, office supplies, etc)	\$ -			\$ -			\$ -			\$ -
2/ Travel and Per Diem	\$ -			\$ -			\$ -			\$ -
3/ Equipment	\$ -			\$ -			\$ -			\$ -
4/ Sub-Contractor	\$ -			\$ -			\$ -			\$ -

Proposal Number
Proposal Name

Detailed Budget Breakdown by Task and by Fiscal Year

Applicant Name

4/ Sub-Contractor	\$ -			\$ -			\$ -			\$ -
4/ Sub-Contractor	\$ -			\$ -			\$ -			\$ -
4/ Sub-Contractor	\$ -			\$ -			\$ -			\$ -
4/ Sub-Contractor	\$ -			\$ -			\$ -			\$ -
Other Costs Subtotal	\$ -			\$ -			\$ -			\$ -
5/ Overhead Percentage (Applied to Personnel & Other Costs)				\$ -			\$ -			\$ -
Total Costs for Task Six	\$ -			\$ -			\$ -			\$ -

1/ Indicate your rate, and change formula in column immediately to the right of this cell

2/ Travel expenses and per diem must be at rates specified by the Department of Personnel Administration. The contractor is required to maintain travel receipts and records for auditing purposes. No travel out of the state of California shall be reimbursed unless prior written authorization is obtained from the State.

3/ Please provide a list and cost of major equipment (\$5,000 or more) to be purchased, and complete "Equipment Detail" Worksheet

4/ Please list each subcontractor and amounts (if subcontractor not selected yet, use function like "ditch construction subcontractor")

5/ Indicate rate in column immediately to the right of this cell; and provide a description of what expenses are covered by overhead. If overhead is > 15% must provide justification

BUDGET FOR TASK SEVEN	TOTAL AMOUNT TASK 7 All Years	Year 1			Year 2			Year 3		
		Amount per hour	Number of Hours	Total Amount for Year 1	Amount per hour	Number of Hours	Total Amount for Year 2	Amount per hour	Number of Hours	Total Amount for Year 3
Personnel										
	\$ -	\$ -		\$ -	\$ -		\$ -	\$ -		\$ -
	\$ -	\$ -		\$ -	\$ -		\$ -	\$ -		\$ -
	\$ -	\$ -		\$ -	\$ -		\$ -	\$ -		\$ -
	\$ -	\$ -		\$ -	\$ -		\$ -	\$ -		\$ -
	\$ -	\$ -		\$ -	\$ -		\$ -	\$ -		\$ -
	\$ -	\$ -		\$ -	\$ -		\$ -	\$ -		\$ -
	\$ -	\$ -		\$ -	\$ -		\$ -	\$ -		\$ -
	\$ -	\$ -		\$ -	\$ -		\$ -	\$ -		\$ -
	\$ -	\$ -		\$ -	\$ -		\$ -	\$ -		\$ -
	\$ -	\$ -		\$ -	\$ -		\$ -	\$ -		\$ -
Personnel Subtotal	\$ -			\$ -			\$ -			\$ -
1/ Benefits as percent of salary				\$0.00			\$0.00			\$0.00
Personnel Total (salary + benefits)	\$0.00			\$0.00			\$0.00			\$0.00
Other Costs	Total All Years			Total Year 1			Total Year 2			Total Year 3
Operating Expenses: (ex: seed, plant materials, irrigation supplies, software, office supplies, etc)	\$ -			\$ -			\$ -			\$ -
2/ Travel and Per Diem	\$ -			\$ -			\$ -			\$ -
3/ Equipment	\$ -			\$ -			\$ -			\$ -
4/ Sub-Contractor	\$ -			\$ -			\$ -			\$ -
4/ Sub-Contractor	\$ -			\$ -			\$ -			\$ -
4/ Sub-Contractor	\$ -			\$ -			\$ -			\$ -
4/ Sub-Contractor	\$ -			\$ -			\$ -			\$ -
4/ Sub-Contractor	\$ -			\$ -			\$ -			\$ -
Other Costs Subtotal	\$ -			\$ -			\$ -			\$ -

Proposal Number
Proposal Name

Detailed Budget Breakdown by Task and by Fiscal Year

Applicant Name

^{5/} Overhead Percentage (Applied to Personnel & Other Costs)				\$ -			\$ -			\$ -
Total Costs for Task Seven	\$ -			\$ -			\$ -			\$ -
1/ Indicate your rate, and change formula in column immediately to the right of this cell										
2/ Travel expenses and per diem must be at rates specified by the Department of Personnel Administration. The contractor is required to maintain travel receipts and records for auditing purposes. No travel out of the state of California shall be reimbursed unless prior written authorization is obtained from the State.										
3/ Please provide a list and cost of major equipment (\$5,000 or more) to be purchased, and complete "Equipment Detail" Worksheet										
4/ Please list each subcontractor and amounts (if subcontractor not selected yet, use function like "ditch construction subcontractor")										
5/ Indicate rate in column immediately to the right of this cell; and provide a description of what expenses are covered by overhead. If overhead is > 15% must provide justification										
		Year 1			Year 2			Year 3		
BUDGET FOR TASK EIGHT	TOTAL AMOUNT TASK 8 All Years	Amount per hour	Number of Hours	Total Amount for Year 1	Amount per hour	Number of Hours	Total Amount for Year 2	Amount per hour	Number of Hours	Total Amount for Year 3
<i>Personnel</i>										
	\$ -	\$ -		\$ -	\$ -		\$ -	\$ -		\$ -
	\$ -	\$ -		\$ -	\$ -		\$ -	\$ -		\$ -
	\$ -	\$ -		\$ -	\$ -		\$ -	\$ -		\$ -
	\$ -	\$ -		\$ -	\$ -		\$ -	\$ -		\$ -
	\$ -	\$ -		\$ -	\$ -		\$ -	\$ -		\$ -
	\$ -	\$ -		\$ -	\$ -		\$ -	\$ -		\$ -
	\$ -	\$ -		\$ -	\$ -		\$ -	\$ -		\$ -
	\$ -	\$ -		\$ -	\$ -		\$ -	\$ -		\$ -
	\$ -	\$ -		\$ -	\$ -		\$ -	\$ -		\$ -
	\$ -	\$ -		\$ -	\$ -		\$ -	\$ -		\$ -
Personnel Subtotal	\$ -			\$ -			\$ -			\$ -
^{1/} Benefits as percent of salary				\$0.00			\$0.00			\$0.00
Personnel Total (salary + benefits)	\$0.00			\$0.00			\$0.00			\$0.00
<i>Other Costs</i>	Total All Years			Total Year 1			Total Year 2			Total Year 3
Operating Expenses: (ex: seed, plant materials, irrigation supplies, software, office supplies, etc)	\$ -			\$ -			\$ -			\$ -
2/ Travel and Per Diem	\$ -			\$ -			\$ -			\$ -
3/ Equipment	\$ -			\$ -			\$ -			\$ -
4/ Sub-Contractor	\$ -			\$ -			\$ -			\$ -
4/ Sub-Contractor	\$ -			\$ -			\$ -			\$ -
4/ Sub-Contractor	\$ -			\$ -			\$ -			\$ -
4/ Sub-Contractor	\$ -			\$ -			\$ -			\$ -
4/ Sub-Contractor	\$ -			\$ -			\$ -			\$ -
Other Costs Subtotal	\$ -			\$ -			\$ -			\$ -
^{5/} Overhead Percentage (Applied to Personnel & Other Costs)				\$ -			\$ -			\$ -
Total Costs for Task Eight	\$ -			\$ -			\$ -			\$ -
1/ Indicate your rate, and change formula in column immediately to the right of this cell										
2/ Travel expenses and per diem must be at rates specified by the Department of Personnel Administration. The contractor is required to maintain travel receipts and records for auditing purposes. No travel out of the state of California shall be reimbursed unless prior written authorization is obtained from the State.										

Applicant Name

[illegible]

Applicant Name

[illegible]

Proposal Number
Proposal Name

Detailed Budget Breakdown by Task and by Fiscal Year

Applicant Name

	\$ -	\$ -	\$ -	\$ -	\$ -	\$ -	\$ -	\$ -
	\$ -	\$ -	\$ -	\$ -	\$ -	\$ -	\$ -	\$ -
	\$ -	\$ -	\$ -	\$ -	\$ -	\$ -	\$ -	\$ -
	\$ -	\$ -	\$ -	\$ -	\$ -	\$ -	\$ -	\$ -
Personnel Subtotal	\$ -		\$ -		\$ -		\$ -	\$ -
^{1/} Benefits as percent of salary			\$0.00		\$0.00			\$0.00
Personnel Total (salary + benefits)	\$0.00		\$0.00		\$0.00		\$0.00	\$0.00
Other Costs	Total All Years		Total Year 1		Total Year 2		Total Year 3	
Operating Expenses: (ex: seed, plant materials, irrigation supplies, software, office supplies, etc)	\$ -		\$ -		\$ -		\$ -	
2/ Travel and Per Diem	\$ -		\$ -		\$ -		\$ -	
3/ Equipment	\$ -		\$ -		\$ -		\$ -	
4/ Sub-Contractor	\$ -		\$ -		\$ -		\$ -	
4/ Sub-Contractor	\$ -		\$ -		\$ -		\$ -	
4/ Sub-Contractor	\$ -		\$ -		\$ -		\$ -	
4/ Sub-Contractor	\$ -		\$ -		\$ -		\$ -	
4/ Sub-Contractor	\$ -		\$ -		\$ -		\$ -	
Other Costs Subtotal	\$ -		\$ -		\$ -		\$ -	
^{5/} Overhead Percentage (Applied to Personnel & Other Costs)			\$ -		\$ -		\$ -	
Total Costs for Task Eleven	\$ -		\$ -		\$ -		\$ -	

1/ Indicate your rate, and change formula in column immediately to the right of this cell

2/ Travel expenses and per diem must be at rates specified by the Department of Personnel Administration. The contractor is required to maintain travel receipts and records for auditing purposes. No travel out of the state of California shall be reimbursed unless prior written authorization is obtained from the State.

3/ Please provide a list and cost of major equipment (\$5,000 or more) to be purchased, and complete "Equipment Detail" Worksheet

4/ Please list each subcontractor and amounts (if subcontractor not selected yet, use function like "ditch construction subcontractor")

5/ Indicate rate in column immediately to the right of this cell; and provide a description of what expenses are covered by overhead. If overhead is > 15% must provide justification

	TOTAL AMOUNT TASK 12 All Years	Year 1			Year 2			Year 3		
		Amount per hour	Number of Hours	Total Amount for Year 1	Amount per hour	Number of Hours	Total Amount for Year 2	Amount per hour	Number of Hours	Total Amount for Year 3
BUDGET FOR TASK TWELVE										
Personnel										
	\$ -	\$ -		\$ -	\$ -		\$ -	\$ -		\$ -
	\$ -	\$ -		\$ -	\$ -		\$ -	\$ -		\$ -
	\$ -	\$ -		\$ -	\$ -		\$ -	\$ -		\$ -
	\$ -	\$ -		\$ -	\$ -		\$ -	\$ -		\$ -
	\$ -	\$ -		\$ -	\$ -		\$ -	\$ -		\$ -
	\$ -	\$ -		\$ -	\$ -		\$ -	\$ -		\$ -
	\$ -	\$ -		\$ -	\$ -		\$ -	\$ -		\$ -
	\$ -	\$ -		\$ -	\$ -		\$ -	\$ -		\$ -
	\$ -	\$ -		\$ -	\$ -		\$ -	\$ -		\$ -
	\$ -	\$ -		\$ -	\$ -		\$ -	\$ -		\$ -
	\$ -	\$ -		\$ -	\$ -		\$ -	\$ -		\$ -
	\$ -	\$ -		\$ -	\$ -		\$ -	\$ -		\$ -
	\$ -	\$ -		\$ -	\$ -		\$ -	\$ -		\$ -
Personnel Subtotal	\$ -			\$ -			\$ -			\$ -
^{1/} Benefits as percent of salary				\$0.00			\$0.00			\$0.00

Proposal Number
Proposal Name

Detailed Budget Breakdown by Task and by Fiscal Year

Applicant Name

Personnel Total (salary + benefits)	\$0.00			\$0.00			\$0.00			\$0.00
Other Costs	Total All Years			Total Year 1			Total Year 2			Total Year 3
Operating Expenses: (ex: seed, plant materials, irrigation supplies, software, office supplies, etc)	\$ -			\$ -			\$ -			\$ -
2/ Travel and Per Diem	\$ -			\$ -			\$ -			\$ -
3/ Equipment	\$ -			\$ -			\$ -			\$ -
4/ Sub-Contractor	\$ -			\$ -			\$ -			\$ -
4/ Sub-Contractor	\$ -			\$ -			\$ -			\$ -
4/ Sub-Contractor	\$ -			\$ -			\$ -			\$ -
4/ Sub-Contractor	\$ -			\$ -			\$ -			\$ -
4/ Sub-Contractor	\$ -			\$ -			\$ -			\$ -
Other Costs Subtotal	\$ -			\$ -			\$ -			\$ -
^{5/} Overhead Percentage (Applied to Personnel & Other Costs)				\$ -			\$ -			\$ -
Total Costs for Task Twelve	\$ -			\$ -			\$ -			\$ -

1/ Indicate your rate, and change formula in column immediately to the right of this cell

2/ Travel expenses and per diem must be at rates specified by the Department of Personnel Administration. The contractor is required to maintain travel receipts and records for auditing purposes. No travel out of the state of California shall be reimbursed unless prior written authorization is obtained from the State.

3/ Please provide a list and cost of major equipment (\$5,000 or more) to be purchased, and complete "Equipment Detail" Worksheet

4/ Please list each subcontractor and amounts (if subcontractor not selected yet, use function like "ditch construction subcontractor")

5/ Indicate rate in column immediately to the right of this cell; and provide a description of what expenses are covered by overhead. If overhead is > 15% must provide justification

BUDGET FOR TASK THIRTEEN	TOTAL AMOUNT TASK 13 All Years	Year 1			Year 2			Year 3		
		Amount per hour	Number of Hours	Total Amount for Year 1	Amount per hour	Number of Hours	Total Amount for Year 2	Amount per hour	Number of Hours	Total Amount for Year 3
Personnel										
	\$ -	\$ -		\$ -	\$ -		\$ -	\$ -		\$ -
	\$ -	\$ -		\$ -	\$ -		\$ -	\$ -		\$ -
	\$ -	\$ -		\$ -	\$ -		\$ -	\$ -		\$ -
	\$ -	\$ -		\$ -	\$ -		\$ -	\$ -		\$ -
	\$ -	\$ -		\$ -	\$ -		\$ -	\$ -		\$ -
	\$ -	\$ -		\$ -	\$ -		\$ -	\$ -		\$ -
	\$ -	\$ -		\$ -	\$ -		\$ -	\$ -		\$ -
	\$ -	\$ -		\$ -	\$ -		\$ -	\$ -		\$ -
	\$ -	\$ -		\$ -	\$ -		\$ -	\$ -		\$ -
	\$ -	\$ -		\$ -	\$ -		\$ -	\$ -		\$ -
	\$ -	\$ -		\$ -	\$ -		\$ -	\$ -		\$ -
Personnel Subtotal	\$ -			\$ -			\$ -			\$ -
^{1/} Benefits as percent of salary				\$0.00			\$0.00			\$0.00
Personnel Total (salary + benefits)	\$0.00			\$0.00			\$0.00			\$0.00
Other Costs	Total All Years			Total Year 1			Total Year 2			Total Year 3
Operating Expenses: (ex: seed, plant materials, irrigation supplies, software, office supplies, etc)	\$ -			\$ -			\$ -			\$ -

Applicant Name

1/ Indicate your rate, and change formula in column immediately to the right of this cell
2/ Travel expenses and per diem must be at rates specified by the Department of Personnel Administration. The contractor is required to maintain travel receipts and records for auditing purposes. No travel out of the state of California shall be reimbursed unless prior written authorization is obtained from the State.
3/ Please provide a list and cost of major equipment (\$5,000 or more) to be purchased, and complete "Equipment Detail" Worksheet
4/ Please list each subcontractor and amounts (if subcontractor not selected yet, use function like "ditch construction subcontractor")
5/ Indicate rate in column immediately to the right of this cell; and provide a description of what expenses are covered by overhead. If overhead is > 15% must provide justification

[illegible]

Detailed Budget Breakdown by Task and by Fiscal Year

Other Costs Subtotal	\$ -			\$ -			\$ -			\$ -
^{5/} Overhead Percentage (Applied to Personnel & Other Costs)				\$ -			\$ -			\$ -
Total Costs for Task Fourteen	\$ -			\$ -			\$ -			\$ -
1/ Indicate your rate, and change formula in column immediately to the right of this cell										
2/ Travel expenses and per diem must be at rates specified by the Department of Personnel Administration. The contractor is required to maintain travel receipts and records for auditing purposes. No travel out of the state of California shall be reimbursed unless prior written authorization is obtained from the State.										
3/ Please provide a list and cost of major equipment (\$5,000 or more) to be purchased, and complete "Equipment Detail" Worksheet										
4/ Please list each subcontractor and amounts (if subcontractor not selected yet, use function like "ditch construction subcontractor")										
5/ Indicate rate in column immediately to the right of this cell; and provide a description of what expenses are covered by overhead. If overhead is > 15% must provide justification										
BUDGET FOR TASK FIFTEEN	TOTAL AMOUNT TASK 15 All Years	Year 1			Year 2			Year 3		
		Amount per hour	Number of Hours	Total Amount for Year 1	Amount per hour	Number of Hours	Total Amount for Year 2	Amount per hour	Number of Hours	Total Amount for Year 3
		\$ -	\$ -	\$ -	\$ -	\$ -	\$ -	\$ -	\$ -	\$ -
		\$ -	\$ -	\$ -	\$ -	\$ -	\$ -	\$ -	\$ -	\$ -
		\$ -	\$ -	\$ -	\$ -	\$ -	\$ -	\$ -	\$ -	\$ -
		\$ -	\$ -	\$ -	\$ -	\$ -	\$ -	\$ -	\$ -	\$ -
		\$ -	\$ -	\$ -	\$ -	\$ -	\$ -	\$ -	\$ -	\$ -
		\$ -	\$ -	\$ -	\$ -	\$ -	\$ -	\$ -	\$ -	\$ -
		\$ -	\$ -	\$ -	\$ -	\$ -	\$ -	\$ -	\$ -	\$ -
Personnel Subtotal	\$ -			\$ -			\$ -			\$ -
^{1/} Benefits as percent of salary										
				\$0.00			\$0.00			\$0.00
Personnel Total (salary + benefits)	\$0.00			\$0.00			\$0.00			\$0.00
Other Costs	Total All Years			Total Year 1			Total Year 2			Total Year 3
Operating Expenses: (ex: seed, plant materials, irrigation supplies, software, office supplies, etc)										
2/ Travel and Per Diem	\$ -			\$ -			\$ -			\$ -
3/ Equipment	\$ -			\$ -			\$ -			\$ -
4/ Sub-Contractor	\$ -			\$ -			\$ -			\$ -
4/ Sub-Contractor	\$ -			\$ -			\$ -			\$ -
4/ Sub-Contractor	\$ -			\$ -			\$ -			\$ -
4/ Sub-Contractor	\$ -			\$ -			\$ -			\$ -
4/ Sub-Contractor	\$ -			\$ -			\$ -			\$ -
Other Costs Subtotal	\$ -			\$ -			\$ -			\$ -
^{5/} Overhead Percentage (Applied to Personnel & Other Costs)				\$ -			\$ -			\$ -
Total Costs for Task Fifteen	\$ -			\$ -			\$ -			\$ -

Proposal Number
Proposal Name

Detailed Budget Breakdown by Task and by Fiscal Year

Applicant Name

1/ Indicate your rate, and change formula in column immediately to the right of this cell
2/ Travel expenses and per diem must be at rates specified by the Department of Personnel Administration. The contractor is required to maintain travel receipts and records for auditing purposes. No travel out of the state of California shall be reimbursed unless prior written authorization is obtained from the State.
3/ Please provide a list and cost of major equipment (\$5,000 or more) to be purchased, and complete "Equipment Detail" Worksheet
4/ Please list each subcontractor and amounts (if subcontractor not selected yet, use function like "ditch construction subcontractor")
5/ Indicate rate in column immediately to the right of this cell; and provide a description of what expenses are covered by overhead. If overhead is > 15% must provide justification

Environmental Compliance

CEQA Compliance

Which type of CEQA documentation do you anticipate?

- none *Skip the remaining questions in this section.*
- negative declaration or mitigated negative declaration

☒ EIR

- categorical exemption *A categorical exemption may not be used for a project which may which may cause a substantial adverse change in the significance of a historical resource or result in damage to scenic resources within an officially designated state scenic highway.*

If you are using a categorical exemption, choose all of the applicable classes below.

- Class 1. Operation, repair, maintenance, permitting, leasing, licensing, or minor alteration of existing public or private structures, facilities, mechanical equipment, or topographical features, involving negligible or no expansion of use beyond that existing at the time of the lead agency's determination. The types of "existing facilities" itemized above are not intended to be all-inclusive of the types of projects which might fall within Class 1. The key consideration is whether the project involves negligible or no expansion of an existing use.

- Class 2. Replacement or reconstruction of existing structures and facilities where the new structure will be located on the same site as the structure replaced and will have substantially the same purpose and capacity as the structure replaced.

- Class 3. Construction and location of limited numbers of new, small facilities or structures; installation of small new equipment and facilities in small structures; and the conversion of existing small structures from one use to another where only minor modifications are made in the exterior of the structure. The numbers of structures described in this section are the maximum allowable on any legal parcel, except where the project may impact on an environmental resource of hazardous or critical concern where designated, precisely mapped, and officially adopted pursuant to law by federal, state, or local agencies.

- Class 4. Minor public or private alterations in the condition of land, water, and/or vegetation which do not involve removal of healthy, mature, scenic trees except for forestry or agricultural purposes, except where the project may impact on an environmental resource of hazardous or critical concern where designated, precisely mapped, and officially adopted pursuant to law by federal, state, or local agencies.

- Class 6. Basic data collection, research, experimental management, and resource evaluation activities which do not result in a serious or major disturbance to an environmental resource, except where the project may impact on an environmental resource of hazardous or critical concern where designated, precisely mapped, and officially adopted pursuant to law by federal, state, or local agencies. These may be strictly for information gathering purposes, or as part of a study leading to an action which a public agency has not yet approved, adopted, or funded.

- Class 11. Construction, or placement of minor structures accessory to (appurtenant to) existing commercial, industrial, or institutional facilities, except where the project may impact on an environmental resource of hazardous or critical concern where designated, precisely mapped, and officially adopted pursuant to law by federal, state, or local agencies.

Identify the lead agency.

CA Department of Fish and Game

Please write out all words in the agency title other than United States (Use the abbreviation "US".) and California (Use the abbreviation "CA".).

Is the CEQA environmental impact assessment complete?

No.

If the CEQA environmental impact assessment process is complete, provide the following information about the resulting document.

Document Name

State Clearinghouse Number

If the CEQA environmental impact assessment process is not complete, describe the plan for completing draft and/or final CEQA documents.

"There is no state version of safe harbor agreements. A "safe harbor" agreement is a Federal Biological Opinion (BO) and incidental take statement which allow a party to "take" a species back to the baseline established at the time of the Agreement. In contrast, the California Endangered Species Act requires all incidental take of California threatened and endangered species to be fully mitigated (Fish & Game Code section 2081) and the alternative vehicle for take, the Natural Community Conservation Planning Act (NCCPA), requires species covered by the Plan to be adequately conserved and

managed towards recovery (Fish and Game Code section 2800 and sequence). The issuance of take permits under both CESA and the NCCPA are discretionary decisions with the potential to cause significant adverse environmental effects and are therefore subject to CEQA.

If however a party receives a Biological Opinion from the USFWS for a species which is both state and federally listed, they can request a "consistency determination" (CD) from DFG under CESA Section 2080.1. A CD is a finding that the Federal BO also meets our CESA standard and therefore "no further authorization or approval is necessary" under CESA. A CD must be made within 30 days and is "non-discretionary" - either the Federal BO for the species also meets our CESA standard (upon submission and without any further modification) and the party is entitled to a CD or it does not. Since it is not a discretionary decision, it is not subject to CEQA. However, for the reasons given above, unless a Federal Biological Opinion with a "safe harbor" provision were written in a uniquely modified way which would also meet the State standard upon submission, it is unlikely it would qualify for a CD and thus be CEQA exempt."

NEPA Compliance

Which type of NEPA documentation do you anticipate?

- none *Skip the remaining questions in this section.*
- environmental assessment/FONSI
- EIS

☒ categorical exclusion

Identify the lead agency or agencies.

US Fish and Wildlife Service

Please write out all words in the agency title other than United States (Use the abbreviation "US".) and California (Use the abbreviation "CA").

If the NEPA environmental impact assessment process is complete, provide the name of the resulting document.

If the NEPA environmental impact assessment process is not complete, describe the plan for completing draft and/or final NEPA documents.

In the case of a Safe Harbor Agreement it is the permit-issuing agency's responsibility to do the NEPA for any permits issued, specifically a section 10 "enhancement of survival" permit. Previous Safe Harbor Agreements have required a Categorical Exclusion (CE). The SRCAF would work with US Fish and Wildlife to determine the type of NEPA compliance needed (CE, EA, or EIS), and prepare or hire a consultant to prepare the documents if it is necessary.

Successful applicants must tier their project's permitting from the CALFED Record of Decision and attachments providing programmatic guidance on complying with the state and federal endangered species acts, the Coastal Zone Management Act, and sections 404 and 401 of the Clean Water Act.

Please indicate what permits or other approvals may be required for the activities contained in your proposal and also which have already been obtained. Please check all that apply. If a permit is *not* required, leave both Required? and Obtained? check boxes blank.

Local Permits And Approvals	Required?	Obtained?	Permit Number (If Applicable)
conditional Use Permit	-	-	
variance	-	-	
Subdivision Map Act	-	-	
grading Permit	-	-	
general Plan Amendment	-	-	
specific Plan Approval	-	-	
rezone	-	-	
Williamson Act Contract Cancellation	-	-	
other	-	-	

State Permits And Approvals	Required?	Obtained?	Permit Number

			(If Applicable)
scientific Collecting Permit	-	-	
CESA Compliance: 2081	x	-	
CESA Compliance: NCCP	x	-	
Lake Or Streambed Alteration Agreement	x	-	
CWA 401 Certification	x	-	
Bay Conservation And Development Commission Permit	-	-	
reclamation Board Approval	x	-	
Delta Protection Commission Notification	-	-	
state Lands Commission Lease Or Permit	x	-	
action Specific Implementation Plan	-	-	
SWRCB Water Transfer Approval	-	-	
other	-	-	

Federal Permits And Approvals	Required?	Obtained?	Permit Number (If Applicable)
ESA Compliance Section 7 Consultation	x	-	
ESA Compliance Section 10 Permit	x	-	
Rivers And Harbors Act	-	-	
CWA 404	-	-	
other	-	-	

Permission To Access Property	Required?	Obtained?	Permit Number (If Applicable)
permission To Access City, County Or Other Local Agency Land Agency Name	-	-	
permission To Access State Land Agency Name	x	-	
California Department Of Fish And Game, California Department Of Parks			

And Recreation, California Dept Of Water Resources, California State Reclamation Board			
permission To Access Federal Land Agency Name US Fish And Wildlife Service, US Bureau Of Reclamation, US Bureau Of Land Management	X	-	
permission To Access Private Land Landowner Name Various Landowners Identified For Pilot And Demonstration Projects, Landowners That Sign On As Cooperators Or Neighbors To A Programmatic Safe Harbor.	X	X	

If you have comments about any of these questions, enter them here.

Additional permits may be required for individual restoration projects. This will be determined as projects are investigated for feasibility under this grant. Letters of support and permission to access property are included from The Nature Conservancy, Mr. Phil Burroughs, Mrs. Anne Bianchi, and Mr. Glenn Hawes.

Land Use

Does the project involve land acquisition, either in fee or through easements?

☒ No. *Skip to the next set of questions.*

☐ Yes. *Answer the following questions.*

How many acres will be acquired by fee?

How many acres will be acquired by easement?

Describe the entity or organization that will manage the property and project activities, including operation and maintenance.

Is there an existing plan describing how the land and water will be managed?

☐ No.

☐ Yes. *Cite the title and author or describe briefly.*

Will the applicant require access across to or through public or private property that the applicant does not own to accomplish the activities in the proposal?

☐ No. *Skip to the next set of questions.*

☒ Yes. *Answer the following question.*

Describe briefly the provisions made to secure this access.

In order to have the Biological Opinion written under section 7 of the Endangered Species Act (ESA), and to obtain baseline habitat and species data under section 10 (Safe Harbor Agreement) of the ESA, we will be required to access Federal and State property as well as some private property. The private property accessed will be limited as much as possible to land under The Nature Conservancy and/or River Partners ownership.

Do the actions in the proposal involve physical changes in the current land use?

☒ No. *Skip to the next set of questions.*

☐ Yes. *Answer the following questions.*

Describe the current zoning, including the zoning designation and the principal permitted uses permitted in the zone.

Describe the general plan land use element designation, including the purpose and uses allowed in the designation.

Describe relevant provisions in other general plan elements affecting the site, if any.

Is the land mapped as Prime Farmland, Farmland of Statewide Importance, Unique Farmland, or Farmland of Local Importance under the California Department of Conservation's Farmland Mapping and Monitoring Program?

– No. *Skip to the next set of questions.*

X Yes. *Answer the following questions.*

Land Designation	Acres	Currently In Production?
Prime Farmland	7046	X
Farmland Of Statewide Importance	122	X
Unique Farmland	2133	X
Farmland Of Local Importance	528	X

Is the land affected by the project currently in an agricultural preserve established under the Williamson Act?

– No. *Skip to the next set of questions.*

X Yes. *Answer the following question.*

Is the land affected by the project currently under a Williamson Act contract?

– No. *Skip to the next set of questions.*

X Yes. *Answer the following question.*

Why is the land use proposed consistent with the contract's terms?

It is anticipated that the project will not affect a change in land use that would preclude it from Williamson Act status.

Describe any additional comments you have about the projects land use.