



Point Sal SMCA Proposal

Protecting Culture, Community, and
Ocean Health

● Agenda

1. Introduction and Key Requests
2. Cultural and Ecological Significance
3. Proposal Details and Co-Management
4. Concerns, Support, and Next Steps

- Introduction and Key Requests

Introduction to NCTC and Point Sal

Honoring & Revitalizing Chumash Culture

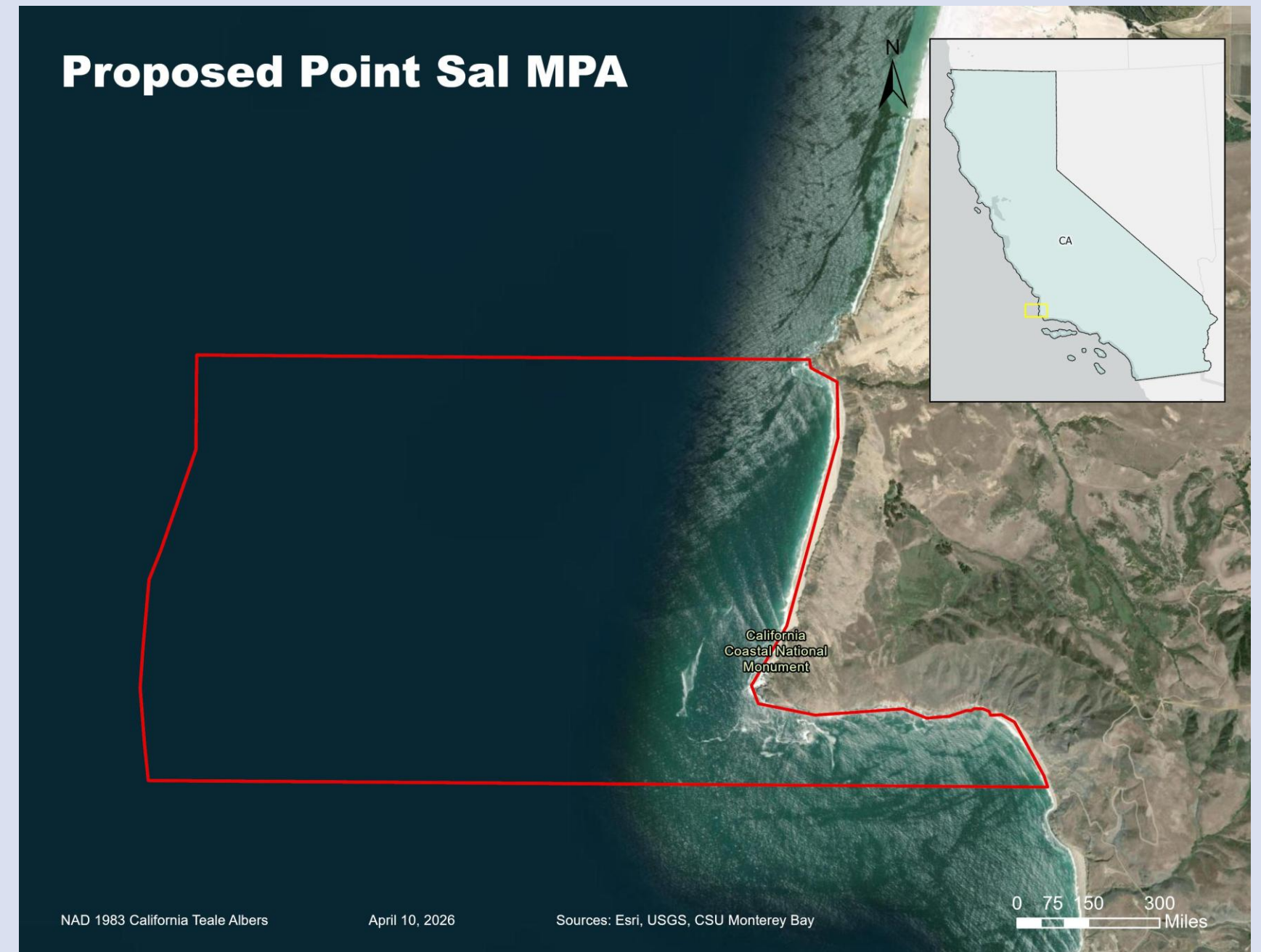
- NCTC's mission is to restore dignity and heritage for Chumash people.
- Chumash presence on the Central Coast dates back to **time immemorial**.
- Nominators of the Chumash Heritage National Marine Sanctuary. This proposal is nested within the boundaries of the Sanctuary.

Point Sal's Cultural Importance

- Located in ancestral territory, Point Sal holds deep cultural significance.
- Visible artifacts and ancient villages highlight Chumash roots.

Community and Stewardship

- NCTC co-leads efforts for strong marine protections at Point Sal.
- Local support spans from officials to youth, uniting the community.



Our Requests to the Commission

Prompt Evaluation of Amended Petition

Request for CDFW to review the SMCA petition as amended in November 2025 without delay.

Regional Meeting Inclusion

Ensure Point Sal SMCA is discussed at the May 5 Goleta regional meeting.

Vote to Approve Petition 2023-28MPA

Commission should vote to approve regulatory changes, and designate a new SMCA at Point Sal in June 2026. NCTC seeks Tribal co-management with these regulation changes in place.





Why Point Sal Is Important

Chumash Cultural Heritage

- Point Sal is central to **Chumash identity** and oral traditions.
- Historical villages of Atajes and Lopse nearby.
- Visible artifacts: rock rings, grinding stones, ancient village sites.

Ecological Abundance

- Rich habitats: kelp beds, rocky substrate, tidepools, sandy beaches.
- **Culturally significant species** like octopus, abalone, California mussel, brown pelican, Brandt's cormorant and more.
- Migratory whale corridor and larval retention zone.
- Seabird rookery and pinniped haul out.



Protecting Point Sal's Future



Continued health of marine life and habitats

- Ocean ecosystems and marine wildlife are considered **relatives** by Chumash people.
- Protections from extractive use ensure Point Sal continues to support a diversity of ocean life and habitats into the future.



Tribal co-stewardship

- Advances recommendations 2a, b, and c of the **Decadal Management Review**.
- Advances three of California's four key strategies to 30x30 (Adaptive Management of the MPA network, Advance Indigenous-Led Conservation, and Strengthen Protections within National Marine Sanctuaries).



Safeguarding a relatively undisturbed area now

- Reducing local stressors can help ecosystems **withstand future stressors**.
- Warming waters, potential for expanded oil & gas drilling, two proposals for nearby offshore wind energy projects.
- Opportunity for land-to-sea conservation.

- Proposal Details and Co-Management

SMCA Proposal Details

Meets State Conservation Standards

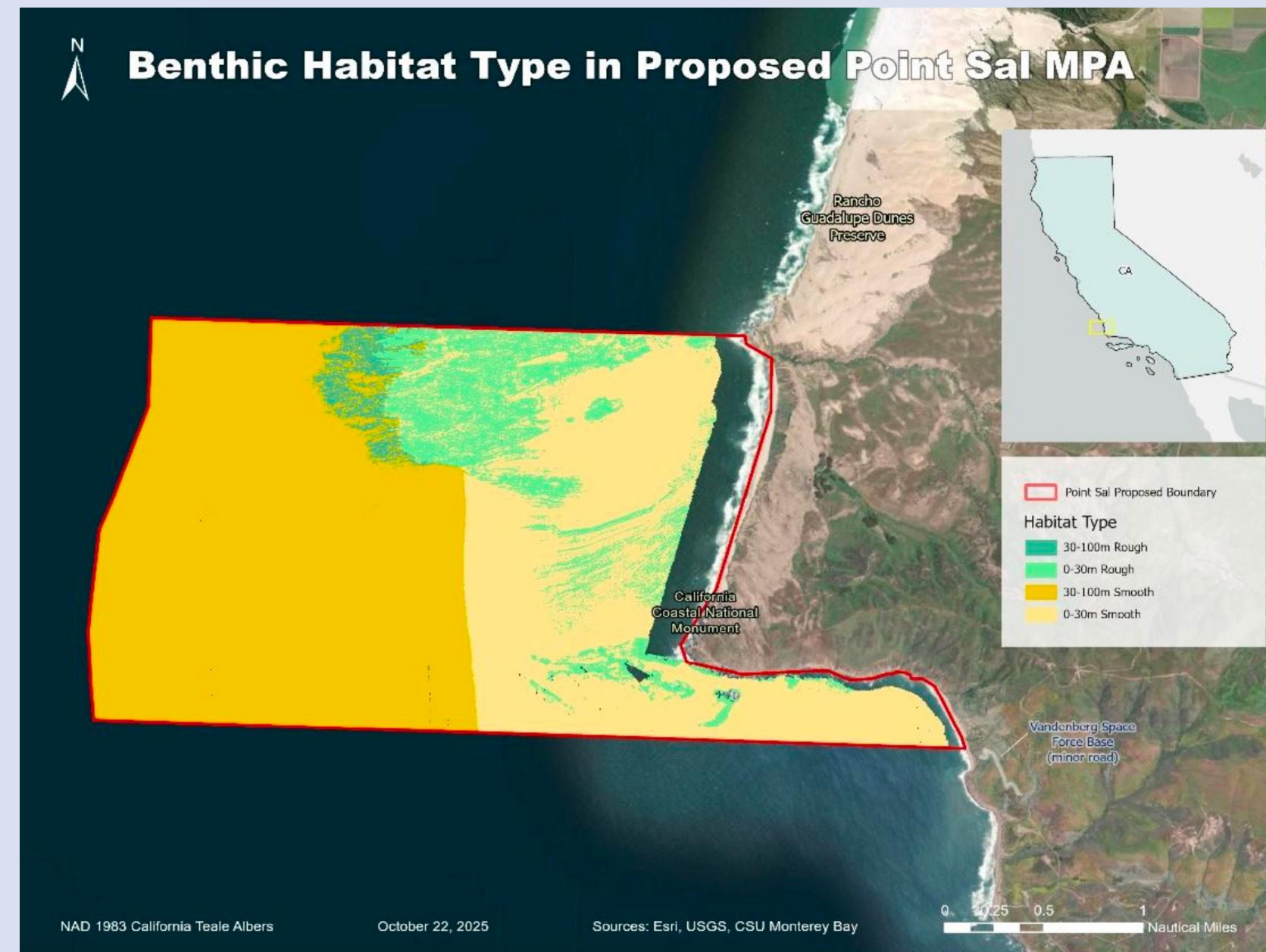
- Covers **9.18 square miles** and 4.03 miles of coastline
- Aligns with California's minimum size and design guidelines

Enhanced Protection Within Sanctuary

- Located inside Chumash Heritage National Marine Sanctuary, providing additional safeguards for a unique coastal ecosystem
- Low-impact shore-based fishing supports cultural and recreational use

Advances Tribal Stewardship & Adaptive Management

- Promotes **collaborative co-management** with NCTC and other Tribes
- Supports adaptive management of California's MPA network



What We're Proposing

Strict Conservation Measures

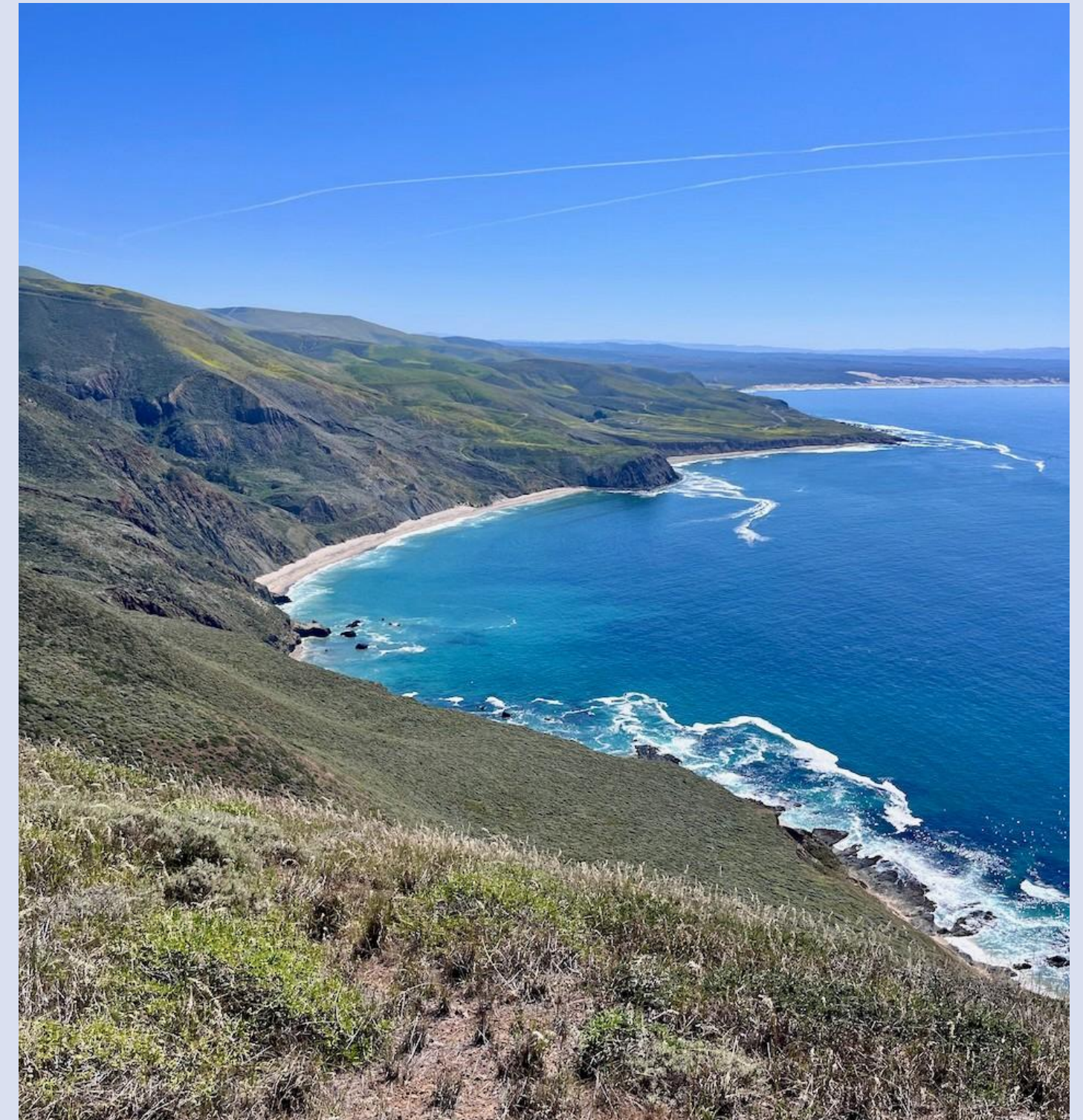
- No take, damage, injury, or possession of marine resources.
- Exception: **Recreational fishing** with hook and line from shore.

Vandenberg Space Force Base Exception

- Take allowed if **mission critical** for base operations and launches.

Tribal Co-Management & Renaming

- Establish MOU for **co-management** with NCTC and other Tribes.
- Rename SMCA with a Chumash place name after consultation.



Point Sal as a Model for Co-Management

Tribal Co-Management Strengthens MPAs

Inclusion of Chumash leadership ensures culturally informed stewardship.

Promoting Ocean Health and Resilience

Safeguarding Point Sal supports diverse habitats and ecosystem resilience.

Community and Cultural Access

Strong local support for conservation benefits and allowance for shore-based fishing foster community and cultural connection.

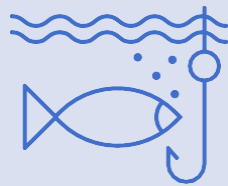
Demonstrating Thriveability

Aim for abundance and well-being for both people and wildlife.



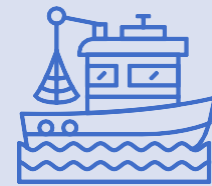
- Concerns, Support, and Next Steps

Addressing Protection Concerns



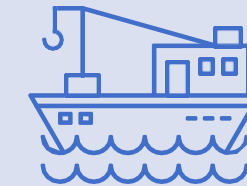
CDFW's Moderate-~~w~~ Protection Rating

Based on an **inaccurate assumption**.
Shore-based fishing at Point Sal is extremely limited, and should not lower level of protection.



Commercial Activity Mostly Outside SMCA

Fine-scale spatial data shows most commercial fishing occurs in federal waters, not within the SMCA.



SMCA Size ~~Minimizes~~ Disruption

Proposed area is **extremely small** compared to the overall high-value fishing block.

Community and Government Support

Broad Community Backing

- The Dunes Center, Sierra Club Santa Lucia Chapter, SBCAN, and Native Coast Action Network strongly support the proposal.
- Over two-thirds of California voters support the Point Sal SMCA proposal.
- Local residents, local youths, and business leaders express strong enthusiasm for added protections.

Government and Organizational Support

- Endorsed by CA State Senator Monique Limon, Assembly members Gregg Hart and Steve Bennett, and SB County Supervisor Roy Lee.
- Supported by Mayor and City Council of Guadalupe, and Vandenberg Space Force Base.

Diverse Coalition

- Environmental groups, business associations, and community organizations are united behind the SMCA.



Takeaways and Next Steps

Cultural and Ecological Significance

- Point Sal is sacred to Chumash people and rich in marine life.

Tribal Co-Management Opportunity

- Proposal advances **collaborative stewardship** with Tribes.

Strengthening Conservation

- SMCA will bolster **biodiversity** and climate resilience.

Community and Government Support

- Broad backing from local leaders, organizations, and residents.

Request for Commission Action

- Prompt evaluation and approval will protect Point Sal for future generations.